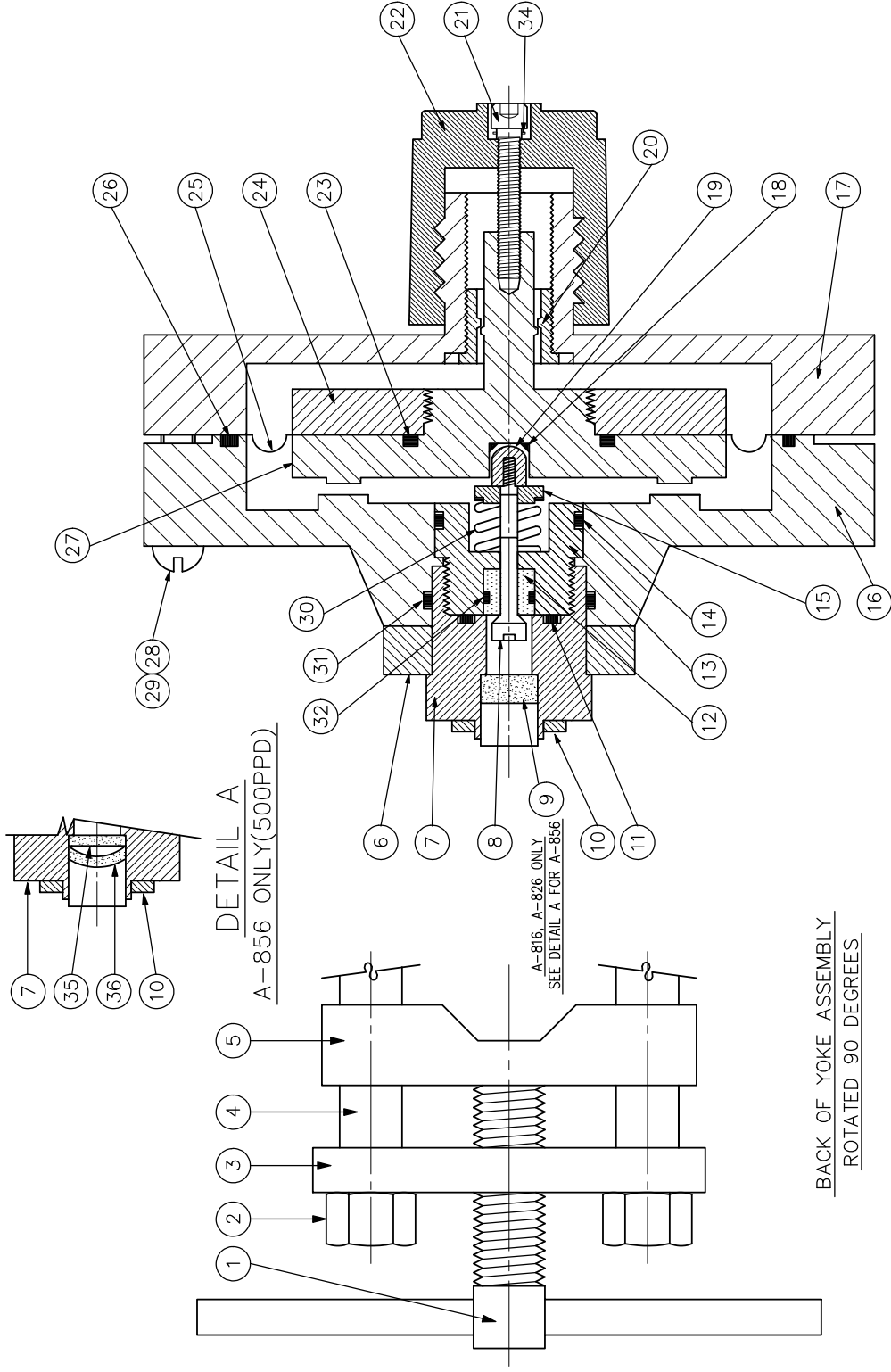


DRAWING NO. A-816/A-826/A-856
Automatic Switchover Chlorinator Parts List — Model 216/226/256



Ref. No.	Part No.	Quantity	Description	Ref. No.	Part No.	Quantity	Description
1	Y-260	1	Yoke Screw	18	S-401	1	Spacer "O" Ring
2	Z-210	2	Yoke Jam Nut	19	YV-250	1	Inlet Valve Nut
3	Y-210	1	Yoke Rod Bar	20	B-237	1	Fixed Poppet Retainer
4	Y-220	2	Yoke Stud	21	Z-245	1	Reset Screw
5	Y-230	1	Yoke Slide Bar	22	B-235	1	Reset Knob
6	Y-240***	1	Yoke Body Bar	23	S-407	1	Diaphragm Plate Seal
7	Y-252***	1	Inlet Adapter	24	BA-250	1	Diaphragm Front Plate
-	(Includes Ref No 1 thru 7 and Filter		Yoke Assembly	25	B-230	1	Diaphragm
-	A-200	1	See Note 6	26	S-408	1	Diaphragm Body Seal
8	YV-230	1	Inlet Valve Plug	27	BA-245	1	Diaphragm Back Plate
9	Y-275	1	Filter	28	Z-220	4	Body Screw (1 1/2" Lgth.)
10	G-201	1	Lead Gasket	29	Z-230	2	Body Screw (2 1/2" Lgth.)
11	S-404	1	Adapter Face Seal	30	YV-260	1	Inlet Spring
12	YV-210	1	Inlet Valve Seat	31	S-413	1	Back Body Inlet Seal
13	YV-220	1	Inlet Adapter Plug	32	S-402	1	Valve Seat Seal
14	S-406	1	Adapter O.D. Seal	33	Z-250*	1	3/8" OD Tube Fitting (Not Shown)
15	YV-240	1	Spring Guide	34	Z-247	1	Washer
16	BA-216**	1	Back Body	35	Y-270	1	Filter Support (See Note 7)
17	BA-225	1	Front Body	36	Y-276	1	Filter (See Note 7)

NOTES:

1. Include Chlorinator Serial Number and Capacity on Order.
2. For A-816 (Model 216) to 100 PPD Use Z-250 (3/8" OD Tube Fitting).
3. For A-826 (Model 226) at 250 PPD Use ZZ-260 (1/2" OD Tube Fitting).
4. For A-856 (Model 256) to 500 PPD Use ZZ-271 (5/8" OD Tube Fitting).
5. For A-856 (Model 256) at 500 PPD Use BA-516 Back Body.
6. Y-240 and Y-252 only available assembled together = A-201 Assembly.
7. Y-275 Filter for A-816, A-826 Only. Y-276 Filter and Y-270 Filter Support for A-856 (See Det. A).