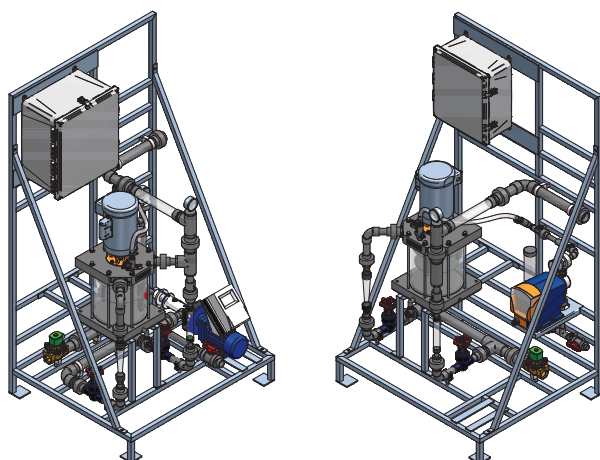


ProMinent® ProMix™-M (In-line Controls)

Overview: ProMix™-M (Inline Controls)



The ProMinent® ProMix™ is a pre-engineered polymer mixing system with intuitive controls. Designed as an in-line or makedown unit, the ProMix™ is engineered to meet liquid polymer applications utilizing diaphragm or progressive cavity pump technologies. The unique mixing regime delivers a highly activated polymer solution to every application with optimum performance.

Feature & Benefits

- LCD display with touchpad control
- 4-20 mA input to pace pump
- Remote start/stop
- General alarm contacts
- Adjustable flush settings
- True multi-zone mixing chamber that delivers a tapered energy profile for proper polymer activation
- Unique injection check valve with easy access for cleaning
- Diaphragm and progressive cavity pump options
- System protection against loss of water flow
- Precise activated polymer solution delivery
- Open design for easy maintenance
- Suction lift or flooded suction
- Twist lock fittings
- Selectable emulsion or mannich polymer

Specifications

- Water Inlet: 1-1/2" FNPT
- Polymer Inlet: 1/2" or 1" FNPT
- Product Outlet: 1-1/2" FNPT
- Drain Connection: 1/4"
- Max. Operating Pressure: 100 PSIG
- Power Supply:
 - DA Models 120 VAC, 1 ph, 60 Hz, 20 Amp
 - PA Models 220 VAC, 1 ph, 60 Hz, 20 Amp
- Motor: 1.5 hp, 115/230 VAC, 1 PH, TEFC, 1725 rpm
- Dimensions: 40" x 34" x 72" (L x W x H)

ProMinent® ProMix™-M (In-line Controls)

Capacity Data

Diaphragm Metering Pump Systems

ProMix™-M / Diaphragm Metering Pump Systems

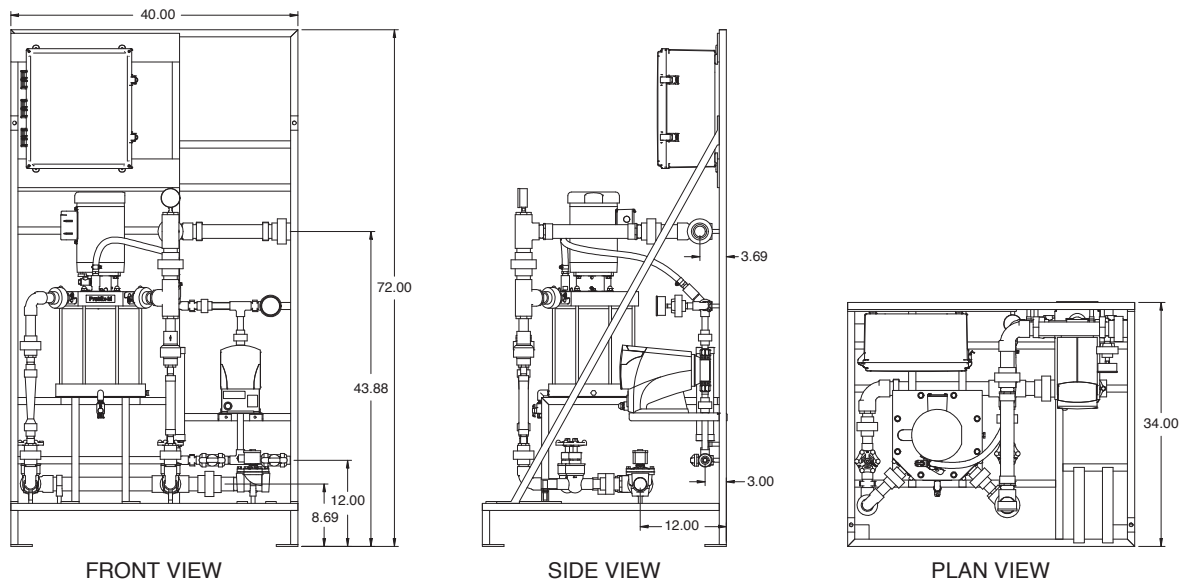
Part Number	Model Number	Primary Dilution gph	Post Dilution gph	Neat Polymer Pump gph	Max. Pump Pressure psig
1048367	300x2-2.3DA	300	300	2.3	100
1048368	600x2-3.8DA	600	600	3.8	100
1048369	600x2-6.2DA	600	600	6.2	100
1048370	600x2-10.3DA	600	600	10.3	58
1048371	1200x2-6.2DA	1200	1200	6.2	100
1048372	1200x2-10.3DA	1200	1200	10.3	58
1048373	1500x2-6.2DA	1500	1500	6.2	100
1048374	1200x2-10.3DA	1500	1500	10.3	58

Progressive Cavity Pump Systems

ProMix™-M / Progressive Cavity Pump Systems

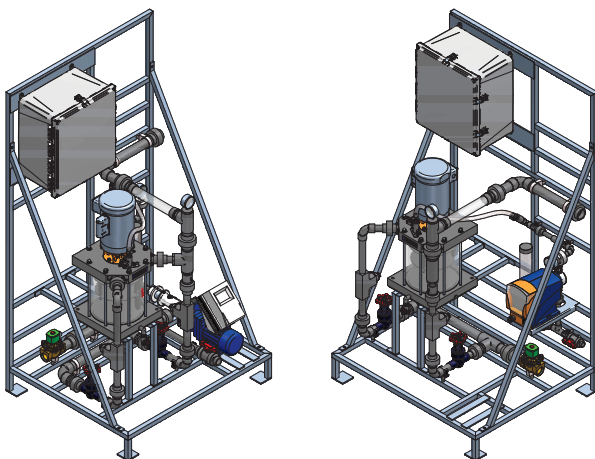
Part Number	Model Number	Primary Dilution gph	Post Dilution gph	Neat Polymer Pump gph	Max. Pump Pressure psig
1048375	300x2-5.0PA	300	300	5.0	100
1048376	600x2-5.0PA	600	600	5.0	100
1048377	600x2-10.0PA	600	600	10.0	100
1048378	1200x2-10.0PA	1200	1200	10.0	100
1048379	1200x2-24.0PA	1200	1200	24.0	100
1048380	1500x2-10.0PA	1500	1500	10.0	100
1048381	1500x2-24.0PA	1500	1500	24.0	100

Dimensional Drawings



ProMinent® ProMix™-M (Batch & In-line Controls)

Overview: ProMix™-M (Batch & In-line Controls)



The ProMinent® ProMix™ is a pre-engineered polymer mixing system with intuitive controls. Designed as an in-line or makedown unit, the ProMix™ is engineered to meet liquid polymer applications utilizing diaphragm or progressive cavity pump technologies. The unique mixing regime delivers a highly activated polymer solution to every application with optimum performance

Feature & Benefits

- LCD display with touchpad control
- 4-20 mA input to pace pump
- Remote start/stop
- General alarm contacts
- Adjustable flush settings
- True multi-zone mixing chamber that delivers a tapered energy profile for proper polymer activation
- Unique injection check valve with easy access for cleaning
- Diaphragm and progressive cavity pump options
- System protection against loss of water flow
- Precise activated polymer solution delivery
- Open design for easy maintenance
- Suction lift or flooded suction
- Twist lock fittings
- Selectable emulsion or mannich polymer
- Select batch or in-line controls

Specifications

- Water Inlet: 1-1/2" FNPT
- Polymer Inlet: 1/2" or 1" FNPT
- Product Outlet: 1-1/2" FNPT
- Drain Connection: 1/4"
- Max. Operating Pressure: 100 PSIG
- Power Supply:
 - DB Models 120 VAC, 1 ph, 60 Hz, 20 Amp
 - PB Models 220 VAC, 1 ph, 60 Hz, 20 Amp
- Motor: 1.5 hp, 115/230 VAC, 1 PH, TEFC, 1725 rpm
- Dimensions: 40" x 34" x 72" (L x W x H)

ProMinent® ProMix™-M (Batch & In-line Controls)

Capacity data

Diaphragm Metering Pump Systems

ProMix™-M / Diaphragm Metering Pump Systems

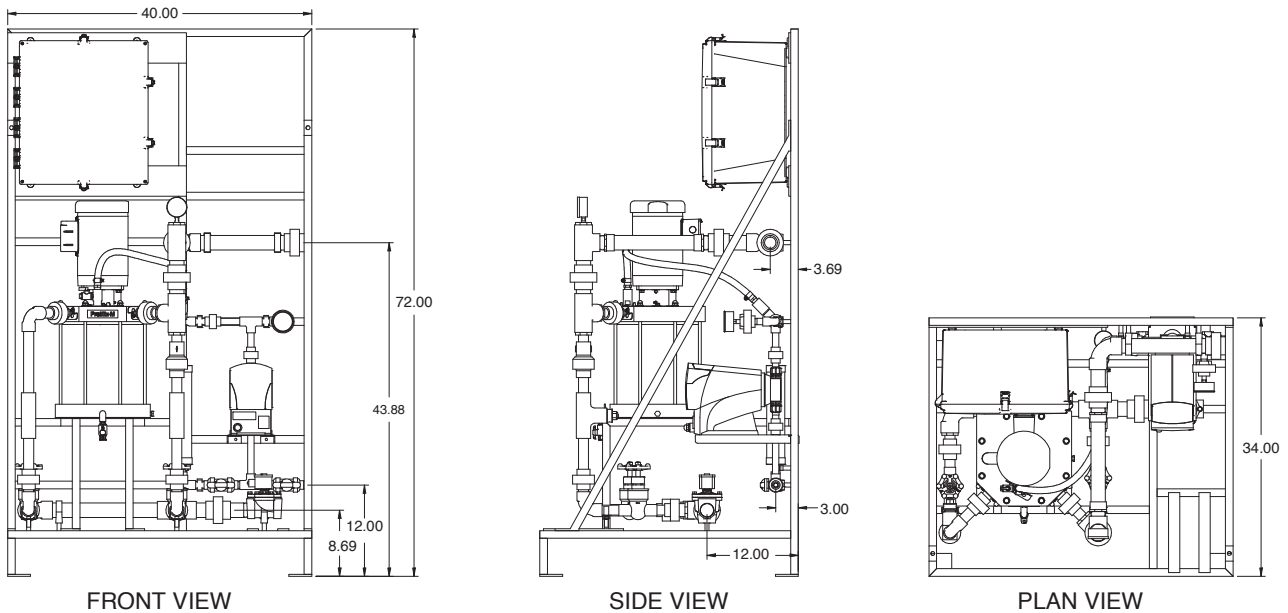
Part Number	Model Number	Primary Dilution gph	Post Dilution gph	Neat Polymer Pump gph	Max. Pump Pressure psig
1048382	300x2-2.3DB	300	300	2.3	100
1048383	600x2-3.8DB	600	600	3.8	100
1048384	1500x2-6.2DB	1500	1500	6.2	100
1048385	1500x2-10.3DB	1500	1500	10.3	58

Progressive Cavity Pump Systems

ProMix™-C / Progressive Cavity Pump Systems

Part Number	Model Number	Primary Dilution gph	Post Dilution gph	Neat Polymer Pump gph	Max. Pump Pressure psig
1048386	1500x2-5.0PB	1500	1500	5.0	100
1048387	1500x2-10.0PB	1500	1500	10.0	100
1048388	1500x2-24.0PB	1500	1500	24.0	100

Dimensional Drawings



ProMinent® ProMix™-S

Overview: ProMix™-S



The ProMinent® ProMix™ is a pre-engineered polymer mixing system made for the water and wastewater markets. Designed as an in-line unit, the ProMix™ can be customized to meet most liquid polymer applications utilizing tubing or diaphragm pump technologies depending on the application requirement or customer preference. The unique mixing chamber allows for complete makedown of the neat or diluted polymer to guarantee a problem-free injection.

Feature & Benefits

- New pump shelf design for peristaltic pump models, allows easy access to the hose & connections
- Open design for easy maintenance
- True multi-zone mixing regime for proper polymer activation
- Unique injection check valve with easy access for cleaning
- Adjustable auto flush settings
- System protection against loss of water flow
- Precise activated polymer solution delivery
- Remote start/stop
- LCD display with touchpad control
- 4-20 mA input to pace pump
- General alarm contacts
- Twist lock fittings for easy maintenance of polymer and water connections
- Selectable start/stop and 4-20 mA control from the control panel
- Adjustable neat polymer pump for flooded suction or suction lift applications

Specifications

- Water Inlet: 3/4" FNPT
- Polymer Inlet: 1/2" FNPT
- Product Outlet: 3/4" FNPT
- Drain Connection: 1/4"
- Max. Operating Pressure: 100 PSIG
- Power Supply: 120 VAC, 1 Phase, 60Hz
- Current Load: 15 Amp
- Motor: 1/2 hp, 115/230 VAC, 1 Phase, TEFC, 1725 rpm
- Dimensions: 24" x 34" x 66" (L x W x H)
- Neat Polymer Pump: Peristaltic or Diaphragm design

ProMinent® ProMix™-S

Capacity data

Peristaltic Tube Pump Systems

ProMix™-S / Peristaltic Tube Pump Systems

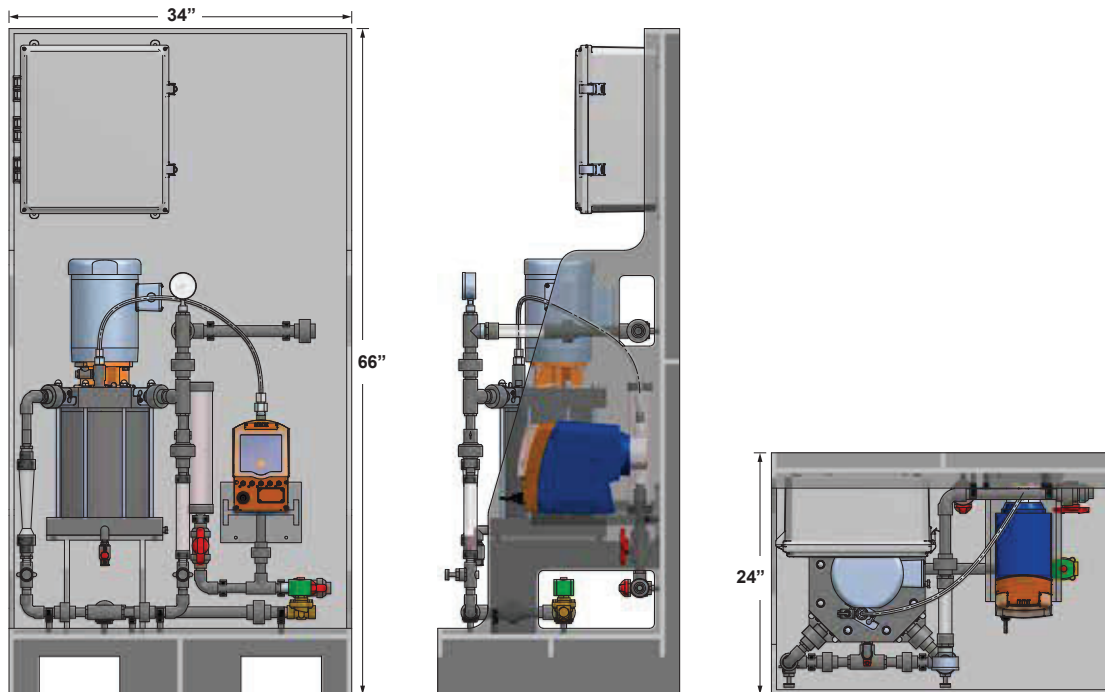
Part Number	Model Number	Primary Dilution	Post Dilution	Neat Polymer Pump	Max. Pump Pressure
		gph	gph	gph	psig
1048347	60x2-0.60TA	60	60	0.72	72
1048349	120x2-1.20TA	120	120	1.44	72
1048352	300x2-3.00TA	300	300	3.60	72

Diaphragm Metering Pump Systems

ProMix™-S / Diaphragm Metering Pump Systems

Part Number	Model Number	Primary Dilution	Post Dilution	Neat Polymer Pump	Max. Pump Pressure
		gph	gph	gph	psig
1048354	60x2-0.60DA	60	60	0.72	100
1048356	120x2-1.20DA	120	120	1.44	100
1048358	300x2-3.00DA	300	300	3.60	100

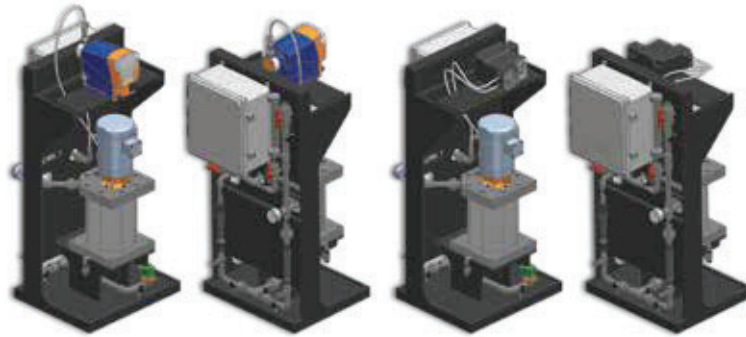
Dimensional Drawings



ProMinent® ProMix™-C

Overview: ProMix™-C

The ProMinent® ProMix™ is a pre-engineered polymer mixing system made for the water and wastewater markets. Designed as an in-line unit, the ProMix™ can be customized to meet most liquid polymer applications utilizing tubing or diaphragm pump technologies depending on the application requirement or customer preference. The unique mixing chamber allows for complete makedown of the neat or diluted polymer to guarantee a problem-free injection.



Feature & Benefits

- Open design for easy maintenance
- True multi-zone mixing regime for proper polymer activation
- Unique injection check valve with easy access for cleaning
- Adjustable auto flush settings
- System protection against loss of water flow
- Precise activated polymer solution delivery
- Remote start/stop
- LCD display with touchpad control
- 4-20 mA input to pace pump
- General alarm contacts
- Twist lock fittings for easy maintenance of polymer and water connections
- Selectable start/stop and 4-20 mA control from the control panel

Specifications

- Water Inlet: 3/4" FNPT
- Polymer Inlet: 1/2" FNPT
- Product Outlet: 3/4" FNPT
- Drain Connection: 1/4"
- Max. Operating Pressure: 100 PSIG
- Power Supply: 120 VAC, 1 Phase, 60Hz
- Current Load: 15 Amp
- Motor: 1/2 hp, 115/230 VAC, 1 Phase, TEFC, 1725 rpm
- Dimensions: 24" x 26" x 50" (L x W x H)
- Neat Polymer Pump: Peristaltic or Diaphragm design

ProMinent® ProMix™-C

Capacity data

Diaphragm Metering Pump Systems

ProMix™-C / Peristaltic Tube Pump Systems

Part Number	Model Number	Primary Dilution gph	Post Dilution gph	Neat Polymer Pump gph	Max. Pump Pressure psig
1048360	60x1-0.22TA	60	-	0.22	65
1048361	60x2-0.95TA	60	60	0.95	65
1048362	120x2-0.95TA	120	120	0.95	65
1048363	120x2-2.00TA	120	120	2.00	65
1048364	300x2-2.00TA	300	300	2.00	65
1048365	300x2-3.73TA	300	300	3.73	50

Diaphragm Metering Pump Systems

ProMix™-C / Diaphragm Metering Pump Systems

Part Number	Model Number	Primary Dilution gph	Post Dilution gph	Neat Polymer Pump gph	Max. Pump Pressure psig
1048460	60x1-1.01DA	60	-	1.01	100
1048461	60x2-1.01DA	60	60	1.01	100
1048462	120x2-1.01DA	120	120	1.01	100
1048463	120x2-2.30DA	120	120	2.30	100
1048474	300x2-2.30DA	300	300	2.30	100
1048475	300x2-3.70DA	300	300	3.70	100

Dimensional Drawings

