



SCALETRON™ SETS THE STANDARD  
IN CORROSION RESISTANCE™

## Model 4042-26x52™ Spill Containment Dual Drum Scale

- Accurately weighs the net remaining chemical that has NOT been dispensed including splashes and spills that are contained within basin
- Standard base size: 26"x52" – other sizes available
- Net capacity: Up to 2,000 lbs. (907 kg) – other capacities available
- Containment capacity: 22 gal.
- High accuracy of  $\pm 0.1\%$
- Single or multi-channel controllers with easy readability to 0.1 lb. (kg)
- Readout in pounds, kilograms, gallons or liters



AccuPro 5000-EK  
Controller with  
Encoder Knob

AccuPro 5000-PB  
Controller with  
3 Button Keypad

AccuPro 6000-TS  
Controller with  
Touch Screen

AccuPro 7000-TS  
Controller with  
Touch Screen

## Dual Drum Scale is Ideal for Frequent On/Off Loading and Meets EPA & OSHA Requirements for Spill Containment

Model 4042-26x52 is designed for weighing two tanks or drums up to 26" in diameter. Featuring a four (4) load cell design, the scale base is ideal for applications requiring frequent on/off loading of containers. PATENTED – MADE IN USA.

### Standard Features

- Rugged steel construction protected by corrosion resistant, zinc oxide primed and dry powder epoxy coated finish, with polyethylene containment basin for use in harsh environments
- Accommodates off-center loads – drums can be placed anywhere on the containment platform and do not need to be leveled
- Four (4) NTEP stainless steel shear beam, temperature compensated load cells with stainless steel leveling feet
- Load cells are mounted outside of spill containment basin to eliminate damage due to chemical spills
- All hardware is stainless steel to prevent corrosion
- Electronic indicator housed in NEMA 4X, UL approved enclosure to provide protection from acids
- 20 ft. of 4 conductor wire cable

### Available Controllers

- AccuPro 5000-EK/PB™ with one or 2 channels, encoder knob or 3 button keypad, audible alarm and 4-20 mA output – scale or loop powered
- AccuPro 6000™ with one or 2 channels or AccuPro 7000™ with up to 4 channels, touch screen, optional audible alarm and 4-20 mA outputs – scale powered

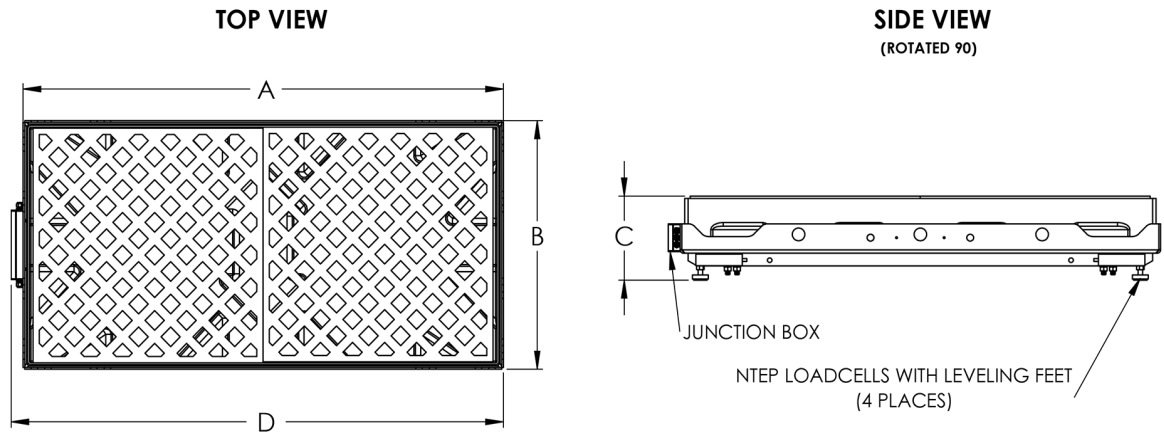
### Options

- High and low level set points
- 0-5V or 0-10V output signal
- Remote mounting of indicator box up to 200 feet away

### Chemicals

- Scale is designed to accurately measure weight of alum, ammonia, caustic, fluoride, phosphate, polymers, sodium aluminate, sodium bisulfate, sodium hydroxide, sodium hypochlorite and other liquids or powders

# Model 4042ECO-26x52™ Spill Containment Dual Drum Scale Specifications



## Scale Base

PART NUMBER	4042-26X52
Platform Length (A)	53.0" (1346 mm)
Platform Width (B)	26.88" (683 mm)
Platform Height (C)	9.09" (231 mm)
D	54.32" (1380 mm)
Net Capacity	Up to 2000 lbs. (907 kg) (150% overload protection is provided)
Containment Capacity	22 gal.
Weight	96 lbs.

## Digital Controllers

PART NUMBER	ACCUPRO 5000-EK or PB	ACCUPRO 6000-TS	ACCUPRO 7000-TS
Interface	Encoder knob or 3 button keypad	Touch screen	Touch screen
Accuracy	±0.1% to ±0.25% of full scale capacity	±0.1% to ±0.25% of full scale capacity	±0.1% to 0.25% of full scale capacity
Display	2 Line x 16 character alphanumeric backlit LCD with 6 digits for weight	4.3" Graphic color touch screen display with adjustable brightness	4.3" Graphic color LCD touch screen display with adjustable brightness
Display Items	Net weight plus bar graph with net weight, gross weight and tare adjustment	Net and gross weight, % and bar graphs plus mA out, tare adjustment and set point values	Net and gross weight, % and bar graphs; mA out, tare adj., set points; data log, feed rate, daily usage, amount used, days till empty; batch net wt, batch and total amount, time
Channels	1 or 2 - One scale base per channel	1 or 2 - One scale base per channel	Up to 4 - One scale base per channel
Output Signal	4-20mA Standard, 0-5V or 0-10V optional - scale or loop powered	4-20mA Standard - scale powered	4-20mA Optional - scale powered
Set Points	2 or 4 Per channel (high or low)	2 or 4 Per channel (high or low)	2 or 4 Per channel (high or low) - max. 8
Remote Option	Up to 200 feet from base frame	Up to 200 feet from base frame	Up to 200 feet from base frame
Audible Alarm	78 dB Internal piezo buzzer, adjustable volume, external buzzer support	Optional 78 dB internal piezo buzzer, external buzzer support	Optional 78 dB internal piezo buzzer, external buzzer support
Communication Option		Modbus TCP or RTU	Modbus TCP or RTU
Power	90/240 VAC, 50/60Hz, 0.10/00.5A	100/277 VAC, 50/60 Hz, 0.10/0.05A	100/277 VAC, 50/60 Hz, 0.10/0.05A
Weight	NEMA 4X, UL approved enclosure	NEMA 4X, UL approved enclosure	NEMA 4X, UL approved enclosure
Enclosure	7lbs.	7lbs.	7lbs.

## Scaleton Industries Ltd.

Bedminster Industrial Park  
53 Apple Tree Lane • P.O. Box 365  
Plumsteadville, PA 18949 • USA

Tel: (+1) 215-766-2670 (International)  
Tel: (+1) 800-257-5911 (USA & Canada)  
Fax: (+1) 215-766-2672

Email: [info@scaletonscales.com](mailto:info@scaletonscales.com)  
Website: [www.scaletonscales.com](http://www.scaletonscales.com)