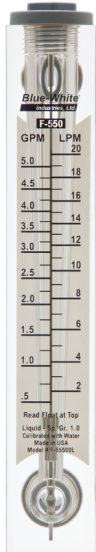


F-550

Variable Area Flow Meter



Features

- > Durable, highly polished, one piece meter body
- > Annealed for added strength and chemical resistance
- > Acceptable in direct sunlight
- > Full scale accuracy +/- 5%
- > 316 SS float & guide-wire

Highlights

Flow range

.025 - 20 GPM
.1 - 75 LPM

Pressures up to

250 PSI
(17.2 bar)

Max. fluid temp.

200 °F
(93 °C)

Body

Acrylic

Adapters

1/4", 3/8", 1/2",
3/4", 1.0" M/NPT

Warranty

1 Year



Maximum Working Pressure (Excluding pump tubes)	250 PSI (17.2 bar) @ 70 °F (21 °C)
Maximum Fluid Temperature	200 °F (93 °C) @ 0 PSI
Full Scale Accuracy	+/- 5%
Calibration Fluid	Water, specific gravity 1.0
Scale Length	4" (100mm) approx.
Environment	Acceptable for direct sunlight exposure
Approximate Shipping Weight	2 lb. (.91 kg)

Dimensions

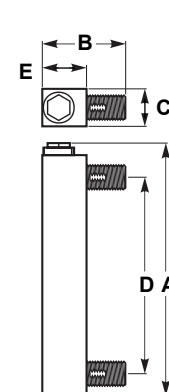
Non-adjustable Panel Mount

Pipe Size	A	B	C	D	E	Mount Hole
F-55250L (1/4")	7-1/4"	2-1/2"	1-1/16"	5-5/8"	1-1/4"	9/16"
F-55375L (3/8")	8-3/8"	2-3/4"	1-11/32"	6-1/2"	1-1/2"	11/16"
F-55376L (3/8")	8-3/8"	2-3/4"	1-11/32"	6-1/2"	1-1/2"	11/16"
F-55500L (1/2")	8-3/8"	2-3/4"	1-11/32"	6-1/2"	1-1/2"	7/8"
F-55750L (3/4")	9"	3-3/4"	1-1/2"	6-1/2"	1-3/4"	1-1/16"
F-55005L (1")	10-5/8"	4"	1-3/4"	8"	2"	1-21/64"
F-55010L (1")	10-5/8"	4"	1-3/4"	8"	2"	1-21/64"
F-55015L (1")	10-5/8"	4"	1-3/4"	8"	2"	1-21/64"
F-55200L (1")	10-5/8"	4"	1-3/4"	8"	2"	1-21/64"

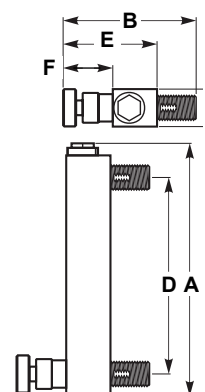
Adjustable Panel Mount

Pipe Size	A	B	C	D	E	F	Mount Hole
F-55250LA (1/4")	7-1/4"	3-7/16"	1"	5-5/8"	2-7/16"	1-11/32"	9/16"
F-55375LA (3/8")	8-3/8"	4-1/2"	1-11/32"	6-1/2"	3-1/4"	1-3/4"	11/16"
F-55376LA (3/8")	8-3/8"	4-1/2"	1-11/32"	6-1/2"	3-1/4"	1-3/4"	11/16"
F-55500LA (1/2")	8-3/8"	4-1/2"	1-11/32"	6-1/2"	3-1/4"	1-3/4"	7/8"
F-55750LA (3/4")	9"	5-1/2"	1-1/2"	6-1/2"	3-1/4"	15/16"	1-1/16"
F-55010LA (1")	10-5/8"	5-1/4"	1-3/4"	8"	3-1/2"	17/16"	1-21/64"
F-55015LA (1")	10-5/8"	5-1/4"	1-3/4"	8"	3-1/2"	17/16"	1-21/64"
F-55200LA (1")	10-5/8"	5-1/4"	1-3/4"	8"	3-1/2"	17/16"	1-21/64"

Non-Adjustable Panel Mount



Adjustable Panel Mount



Non-wetted Components:

Bulkhead Nuts Polypropylene

Wetted Components:

Meter Body Acrylic

Adapters Polypropylene

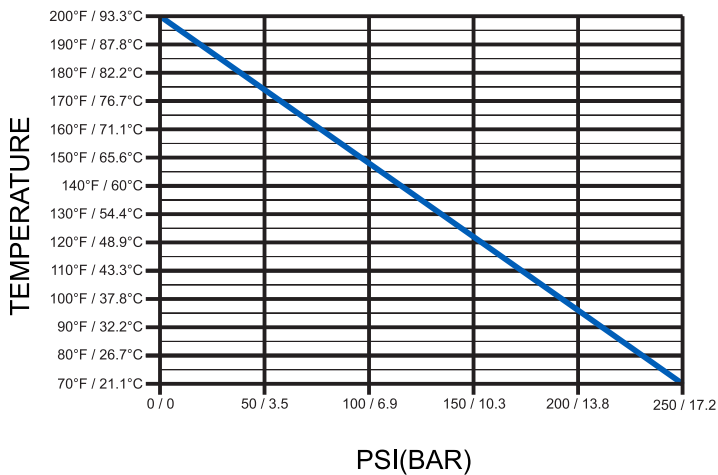
Guide Rod Holder Polysulfone

O-ring Seals Viton® (optional EP)

Float 316SS or PTFE (per model)

Guide Rod Standard Series: 316SS

Temperature vs. Pressure



Output Specifications

Model	Feed Rate		Max Pressure	Max Temperature	Float Material
	GPM	LPM	PSI (bar)	°F (°C)	
F-55250L	.025–.250	0.1–1.0	250 (17.2)	70 (21)	316ss
F-55375L	0.1–1.0	0.4–4.0	250 (17.2)	70 (21)	316ss
F-55376L	0.2–2.0	0.75–7.5	250 (17.2)	70 (21)	316ss
F-55500L	0.5–5.0	2.0–20.0	250 (17.2)	70 (21)	316ss
F-55750L	1.0–10.0	4.0–40.0	250 (17.2)	70 (21)	316ss
F-55005L	1.0–5.0	3.0–18.0	250 (17.2)	70 (21)	PTFE
F-55010L	1.0–10.0	4.0–40.0	250 (17.2)	70 (21)	316ss
F-55015L	1.0–15.0	5.0–60.0	250 (17.2)	70 (21)	316ss
F-55200L	2.0–20.0	7.5–75.0	250 (17.2)	70 (21)	316ss

Model Number Matrix

F-550 Model Number

F	Flow Meter						
Series							
55	F-550 Acrylic Body						
Scale							
250	0.025 - .250 gpm (0.1 - 1.0 lpm) 316 SS Float, 0.25" Male NPT adapter, PP						
375	0.1 - 1.0 gpm (0.4 - 4.0 lpm) 316 SS Float, 0.375" Male NPT adapter, PP						
376	0.2 - 2.0 gpm (0.75 - 7.5 lpm) 316 SS Float, 0.375" Male NPT adapter, PP						
500	0.5 - 5.0 gpm (2.0 - 20 lpm) 316 SS Float, 0.50" Male NPT adapter, PP						
750	1.0 - 10 gpm (4.0 - 40 lpm) 316 SS Float, 0.75" Male NPT adapter, PP						
005	1.0 - 5.0 gpm (3.0 - 18 lpm) PTFE Float, 1.0" Male NPT adapter, PP						
010	1.0 - 10 gpm (4.0 - 40 lpm) 316 SS Float, 1.0" Male NPT adapter, PP						
015	1.0 - 15 gpm (5.0 - 60 lpm) 316 SS Float, 1.0" Male NPT adapter, PP						
200	2 - 20 gpm (7.5 - 75 lpm) 316 SS Float, 1.0" Male NPT adapter, PP						
Guide-Wire Material							
L	316 Stainless steel rod						
Installation							
(Blank)	Panel Mount Model						
A	Adjustable Panel Mount Model (scale 250 - 500 only)						
A	Adjustable Panel Mount Model (scale 750 - 200 only)						
Adapter							
(Blank)	Standard						
-8	0.50" Male NPT adapter (for 375, 376 and 750 models only)						
O-Rings							
(Blank)	Viton						
-22N	EP						
F	-	55	250	L			Sample Model Number