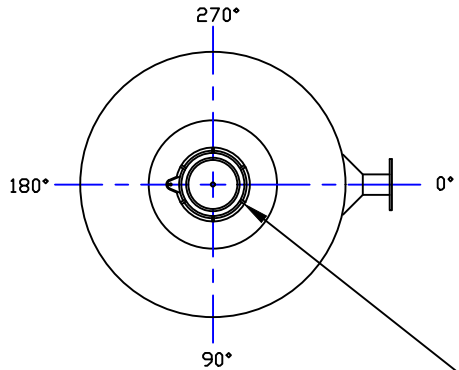
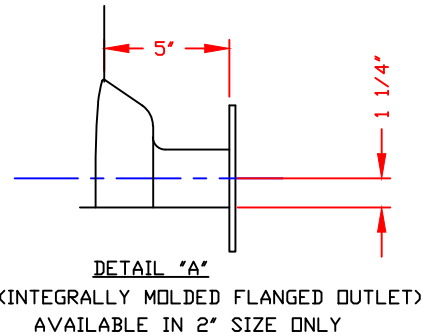
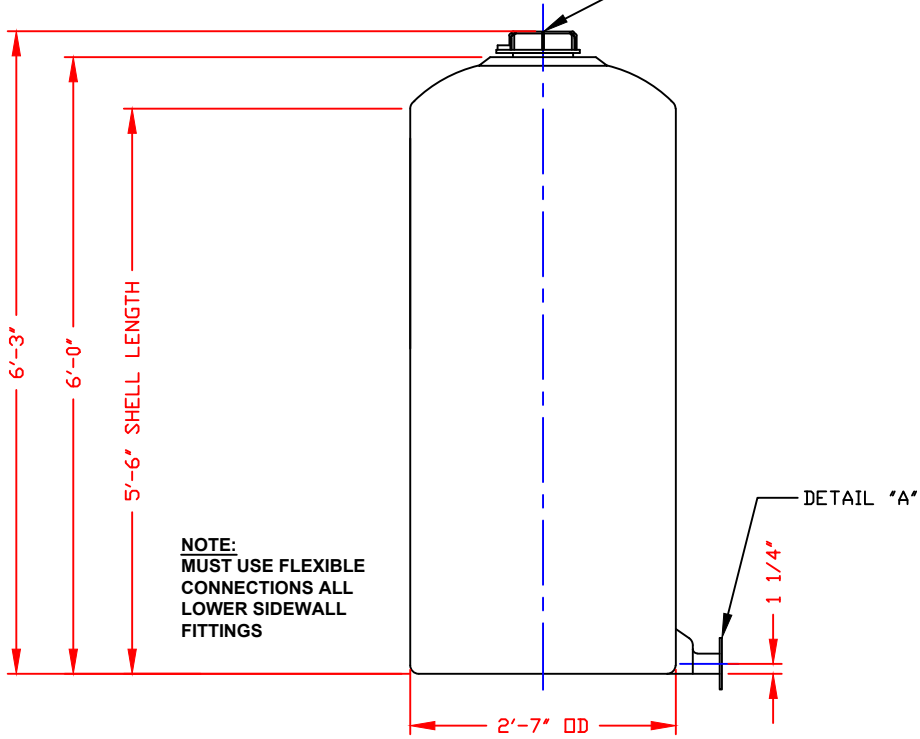


NON-CONTROLLED COPY
 INFORMATION SUBJECT TO CHANGE WITHOUT NOTICE
 VERIFY REV LEVEL OF PAPER COPY WITH REV LEVEL ON PPC WEB SITE




STANDARD COVER:
 7" TH'D CAP/BLANK/CHMPLS/BLACK/PE
 STOCK NO. 4565



- NOTES**
1. THIS IS A COMPUTER GENERATED DWG. DO NOT REVISE BY HAND.
 2. DIMENSIONS WILL VARY ±3% DUE TO VARIATIONS IN MULTIPLE MOLDS & CONDITIONS PREVALENT DURING MANUFACTURE & USAGE.

CALCULATED CAPACITIES/ VOLUME IN U.S. GALLONS		
DESIGN CAP	DOMED VOL	TOTAL VOL
210	9	219

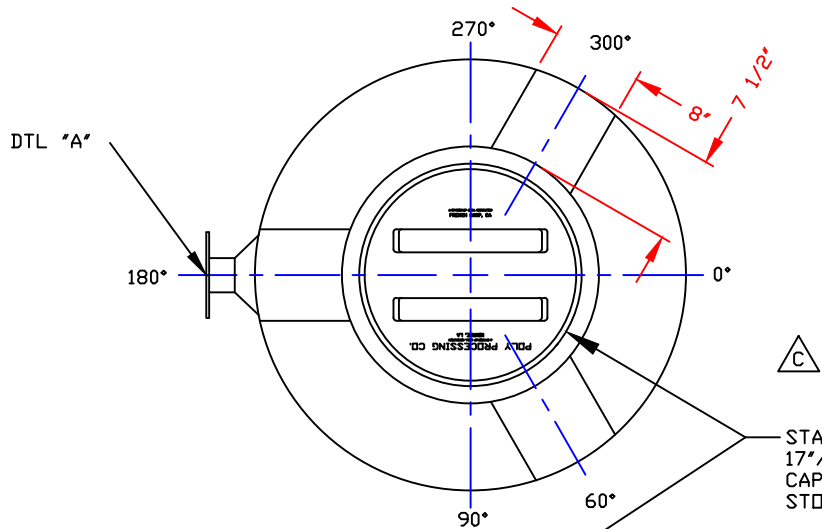
CONFIDENTIAL PROPERTY OF
 POLY PROCESSING COMPANY
 NOT FOR REPRINT OR USE
 WITHOUT PERMISSION

DWG TITLE		200 GALLON IMFO TANK		
SCALE:	3/4"=1'-0"	 POLYPROCESSING SOLUTIONS, SIMPLIFIED.	DR:	B. HARPER
DATE:	09/25/19		CK:	
		SHEET	COMPUTER FILE	REV
		1 OF 1	IMFO-F-00200	A

REV "A" REMOVED NOTE ABOUT GALLONAGE MARKERS MOLDED IN BY: BH 04/20/2022

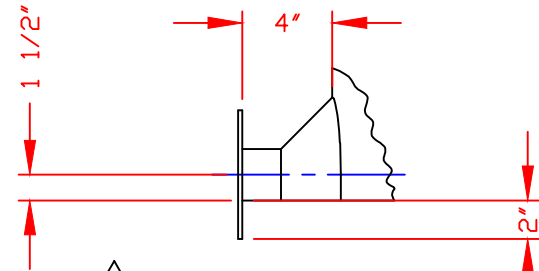
NON-CONTROLLED COPY
 INFORMATION SUBJECT TO CHANGE WITHOUT NOTICE
 VERIFY REV LEVEL OF PAPER COPY WITH REV LEVEL ON PPC WEB SITE

REV "A" ADDED FITTING NOTE BY:JB 3/3/03 CK:MBW
 REV "B" CORRECTED INFO BY:MBW 4/12/05 CK:JB
 REV "C" FLATS ADDED TO TOP BY:MBW 6/27/05 CK:JB
 REV "D" REMOVED FLATS BY:JB 3/24/09 CK:WWM
 REV "E" ADDED FLATS BY:BT 1/11/13 CK:WWM

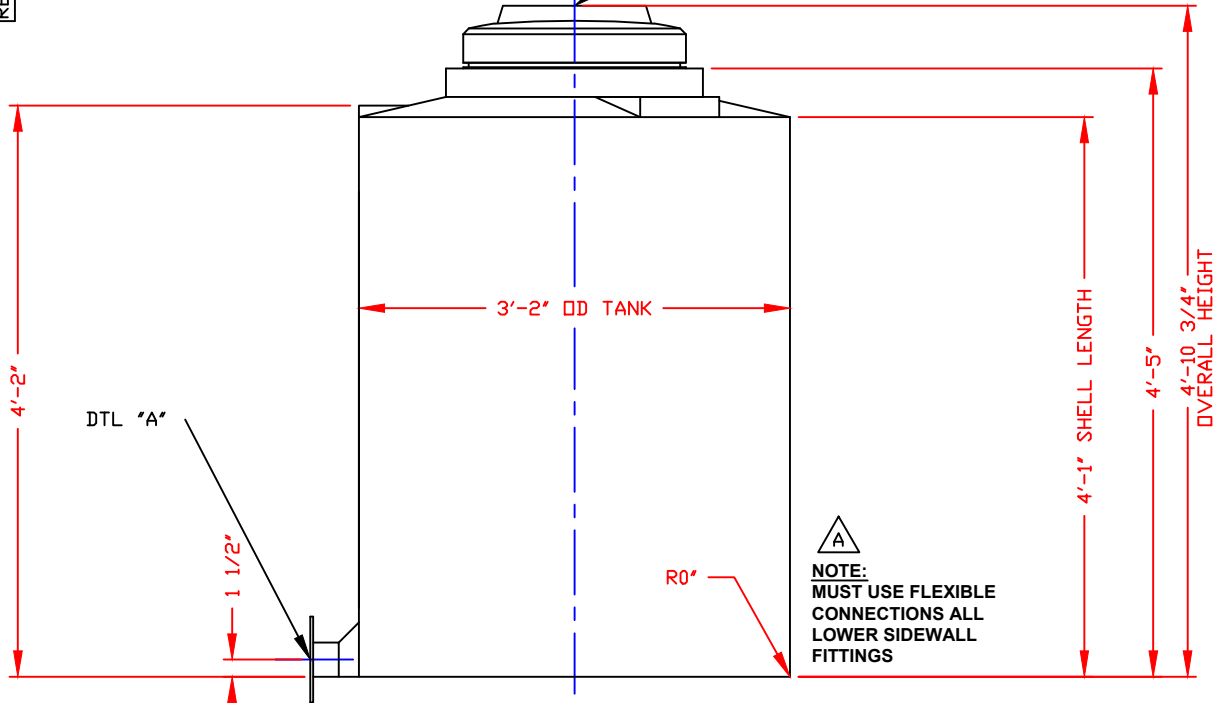


△ C
 STANDARD COVER:
 17"/BUTTRESS THREAD
 CAP/BLACK PE
 STOCK NO. 4558

SERVICE	MK	STOCK NO.	SIZE	FITTING	DEG	ELEV



△ B
 DETAIL "A"
 (INTEGRALLY MOLDED FLANGED OUTLET)
 AVAILABLE IN 3" SIZE ONLY



△ A
 NOTE:
 MUST USE FLEXIBLE
 CONNECTIONS ALL
 LOWER SIDEWALL
 FITTINGS

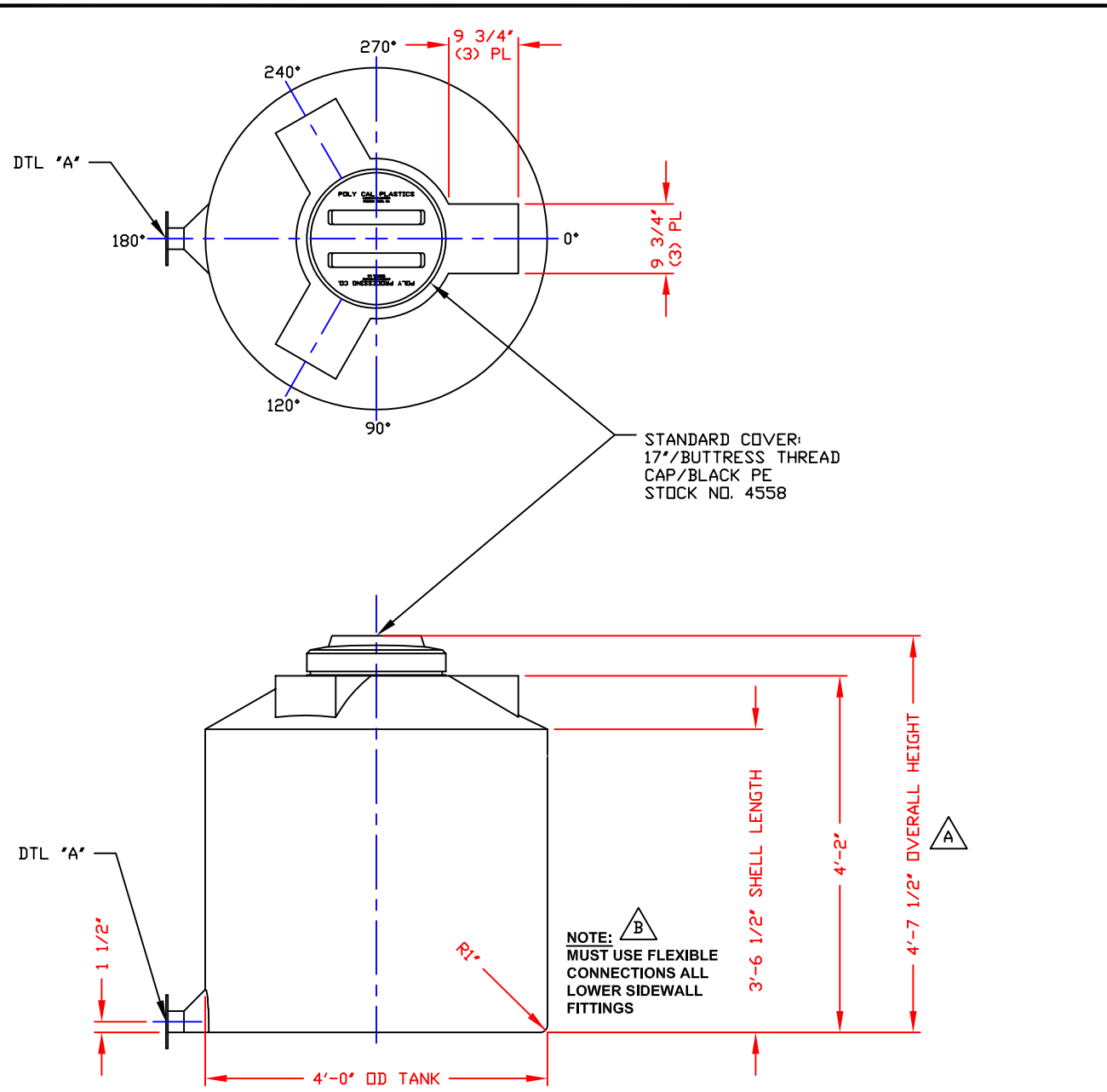
- NOTES**
- THIS IS A COMPUTER GENERATED DWG. DO NOT REVISE BY HAND.
 - DIMENSIONS WILL VARY ±3% DUE TO VARIATIONS IN MULTIPLE MOLDS & CONDITIONS PREVALENT DURING MANUFACTURE & USAGE.
 - NO MOLDED IN GALLONAGE MARKERS THIS TANK.

DESIGN CAP	TOTAL VOL
233	240

CONFIDENTIAL PROPERTY OF
 POLY PROCESSING COMPANY
 NOT FOR REPRINT OR USE
 WITHOUT PERMISSION

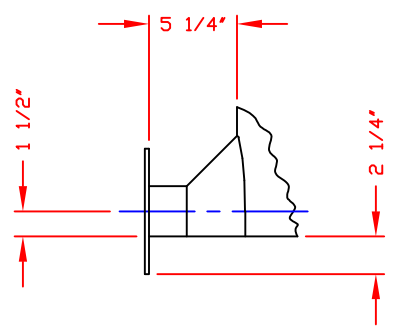
DWG TITLE 230 GALLON IMFO TANK		Western Region P.O. Box 89 9023 South Ash Street French Camp, CA 95231 (209) 962-4964 FAX (209) 962-6455		DR: B. HARPER
SCALE: 1"=1'-0"			CK: 	
DATE: 09/18/19			SHEET 1 OF 1	COMPUTER FILE IMFO-F-00230

NON-CONTROLLED COPY
 INFORMATION SUBJECT TO CHANGE WITHOUT NOTICE
 VERIFY REV LEVEL OF PAPER COPY WITH REV LEVEL ON PPC WEB SITE



STANDARD COVER:
 17"/BUTTRESS THREAD
 CAP/BLACK PE
 STOCK NO. 4558

NOZZLE SCHEDULE & ACCESSORIES					
SERVICE	MK	STOCK NO.	SIZE	FITTING	DEG ELEV




DETAIL "A"
 (INTEGRALLY MOLDED FLANGED OUTLET)
 AVAILABLE IN 3' SIZE ONLY
 SCALE: 1 1/2"=1'-0"

- NOTES**
- THIS IS A COMPUTER GENERATED DWG. DO NOT REVISE BY HAND.
 - DIMENSIONS WILL VARY ±3% DUE TO VARIATIONS IN MULTIPLE MOLDS & CONDITIONS PREVALENT DURING MANUFACTURE & USAGE.
 - MOLDED IN GALLONAGE MARKERS @ 0° IN 50 GAL INCREMENTS STARTING @ 50 GAL UP TO 250 GAL. AVOID WHEN PLACING FITTINGS.

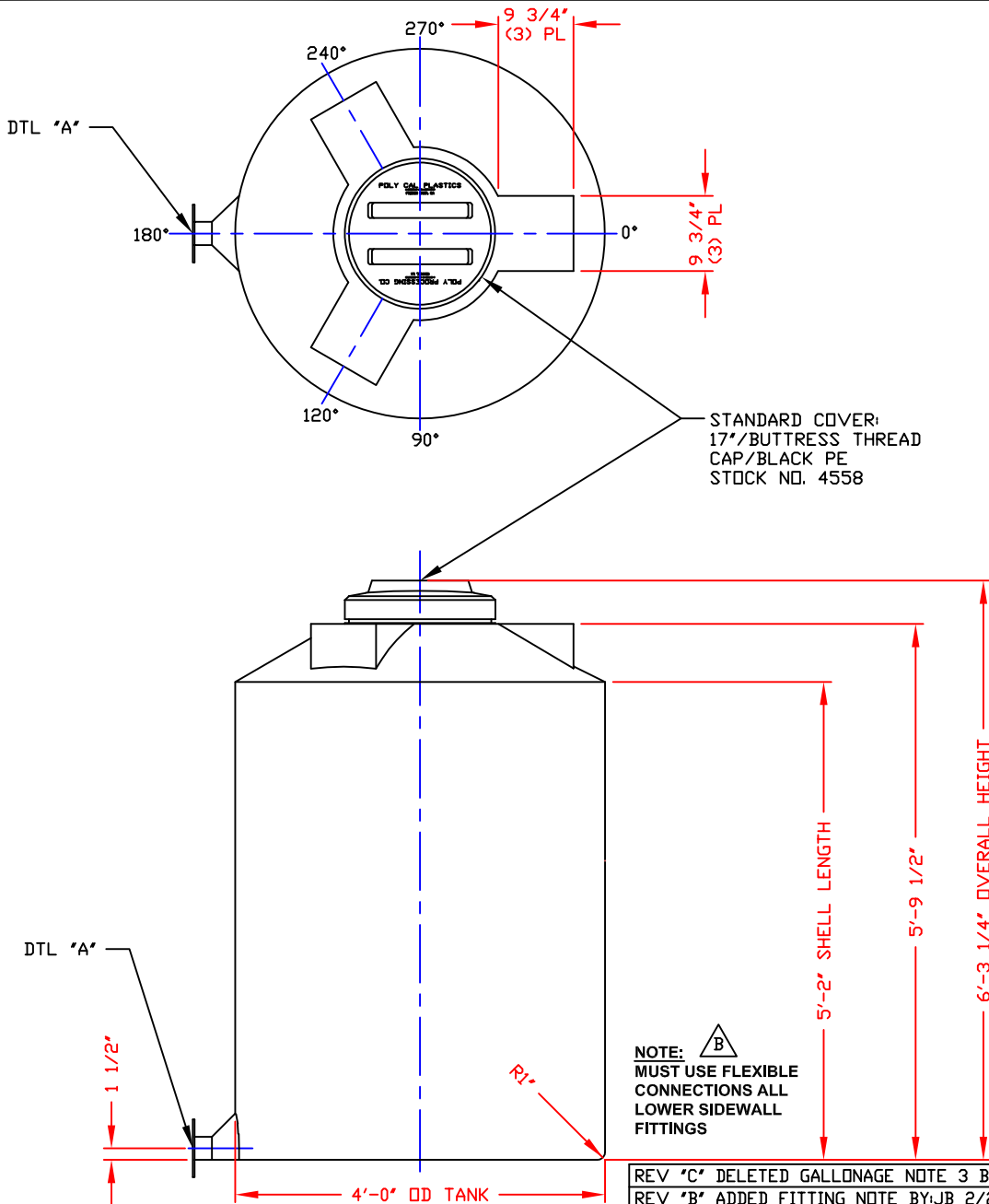
CALCULATED CAPACITIES/ VOLUME IN U.S. GALLONS		
DESIGN CAP	DOME VOL	TOTAL VOL
328	35	363

CONFIDENTIAL PROPERTY OF
 POLY PROCESSING COMPANY
 NOT FOR REPRINT OR USE
 WITHOUT PERMISSION

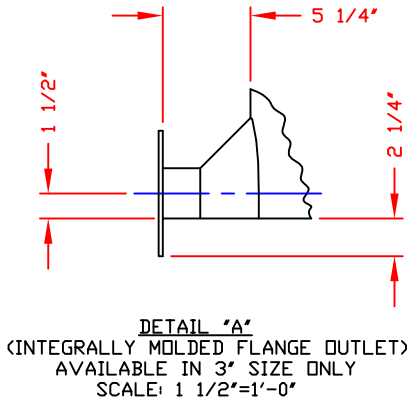
DWG TITLE			325 GALLON IMFO TANK	
SCALE:	3/4"=1'-0"	 Central Region P.O. Box 4150 (71211) 2201 Old Sterlington Rd. Monroe, LA 71203 (318) 343-7563 FAX (318) 343-6795	DR:	B. HARPER
DATE:	9/18/19		CK:	
REV		SHEET	COMPUTER FILE	REV
		1 OF 1	IMFO-F-00325	B

REV "B" ADDED FITTING NOTE BY:JB 2/27/03 CK:MBW
 REV "A" ADDED DIMENSION BY:JB 10/7/02 CK:MBW

NON-CONTROLLED COPY
 INFORMATION SUBJECT TO CHANGE WITHOUT NOTICE
 VERIFY REV LEVEL OF PAPER COPY WITH REV LEVEL ON PPC WEB SITE



NOZZLE SCHEDULE & ACCESSORIES					
SERVICE	MK	STOCK NO.	SIZE	FITTING	DEG ELEV



NOTES
 1. THIS IS A COMPUTER GENERATED DWG. DO NOT REVISE BY HAND.
 2. DIMENSIONS WILL VARY ±3% DUE TO VARIATIONS IN MULTIPLE MOLDS & CONDITIONS PREVALENT DURING MANUFACTURE & USAGE.

CALCULATED CAPACITIES/ VOLUME IN U.S. GALLONS		
DESIGN CAP	DOME VOL	TOTAL VOL
478	35	513

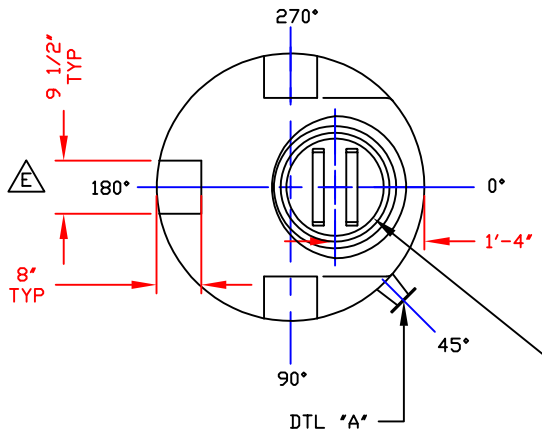
CONFIDENTIAL PROPERTY OF
 POLY PROCESSING COMPANY
 NOT FOR REPRINT OR USE
 WITHOUT PERMISSION

NOTE: B
 MUST USE FLEXIBLE
 CONNECTIONS ALL
 LOWER SIDEWALL
 FITTINGS

REV 'C' DELETED GALLONAGE NOTE 3 BY:JB 10/20/20 CK:WM
REV 'B' ADDED FITTING NOTE BY:JB 2/27/03 CK:MBW
REV 'A' ADDED DIMENSION BY:JB 10/7/02 CK:MBW

DWG TITLE		475 GALLON IMFO TANK	
SCALE: 3/4"=1'-0"		Central Region P.O. Box 4150 (71211) 2201 Old Stearnington Rd. Monroe, LA 71203 (504) 343-7565 FAX (504) 343-0795	DR: B. HARPER
DATE: 09/18/19		CK:	
SHEET		COMPUTER FILE	REV
1 OF 1		IMFO-F-00475	C

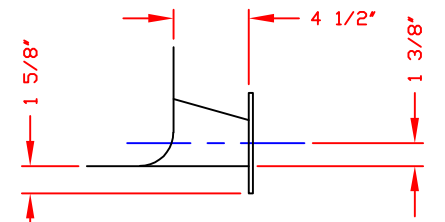
NON-CONTROLLED COPY
 INFORMATION SUBJECT TO CHANGE WITHOUT NOTICE
 VERIFY REV LEVEL OF PAPER COPY WITH REV LEVEL ON PPC WEB SITE



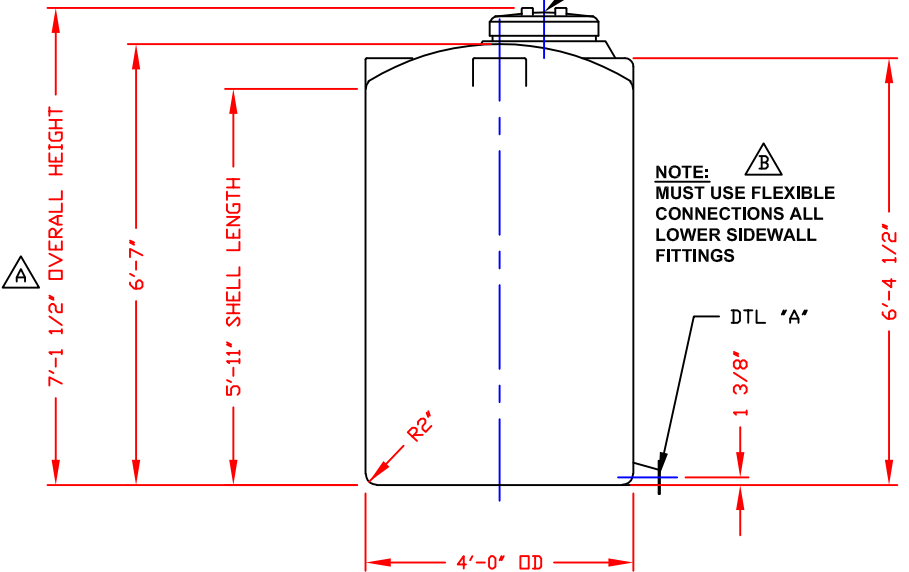
△△
 STANDARD COVER:
 17" CAP/BUTTRESS THR'D
 BLACK PE
 STOCK NO. 4558

NOZZLE SCHEDULE & ACCESSORIES					
SERVICE	MK	STOCK NO.	SIZE	FITTING	DEG ELEV

TO BE USED WITH SPLIT BACK-UP RING & COMPANION FLG.--AVAILABLE IN 2" SIZE ONLY



DETAIL "A"
 (INTEGRALLY MOLDED FLANGED OUTLET)
 SCALE: 1 1/2"=1'-0"




NOTE: **△**
 MUST USE FLEXIBLE CONNECTIONS ALL LOWER SIDEWALL FITTINGS

NOTES:
 1. THIS IS A COMPUTER GENERATED DWG. DO NOT REVISE BY HAND.
 2. DIMENSIONS WILL VARY ±3% DUE TO VARIATIONS IN MULTIPLE MOLDS & CONDITIONS PREVALENT DURING MANUFACTURE & USAGE.
 3. MOLDED IN GALLONAGE MARKERS IN MANWAY AREA IN 50 GAL INCREMENTS UP TO 550 GAL.

CALCULATED CAPACITIES/ VOLUME IN U.S. GALLONS		
DESIGN CAP	DOME VOL	TOTAL VOL
547	25	572

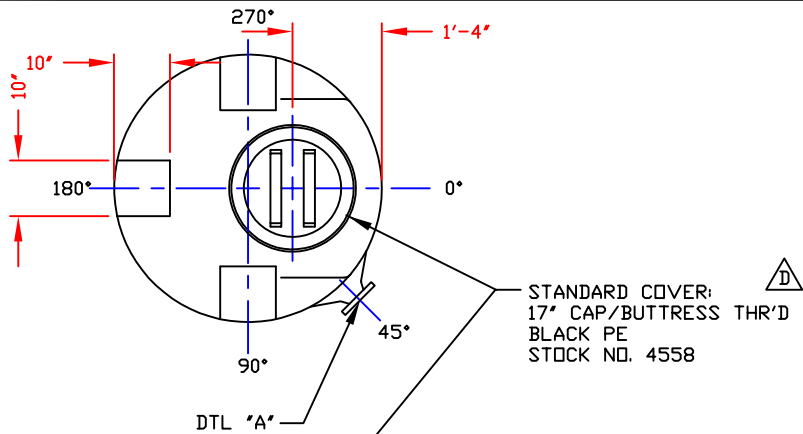
CONFIDENTIAL PROPERTY OF
 POLY PROCESSING COMPANY
 NOT FOR REPRINT OR USE
 WITHOUT PERMISSION

DWG TITLE			
545 GALLON IMFD TANK			
SCALE: 1/2"=1'-0"	 POLYPROCESSING SOLUTIONS. SIMPLIFIED.	Central Region P.O. Box 4159 (71211) 2801 Old Sterlington Rd. Monroe, LA 70503 (504) 343-7265 FAX (504) 343-8795	DR: B. HARPER
DATE: 09/18/19		CK: 	
SHEET		COMPUTER FILE	REV
1 OF 1		IMFD-F-00545	E

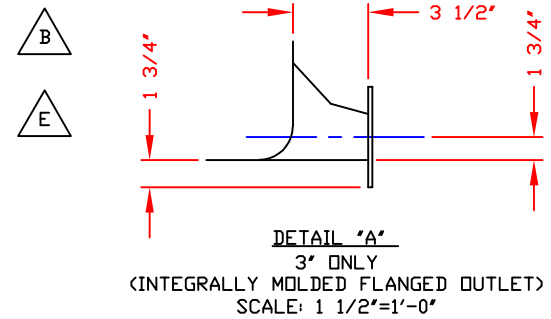
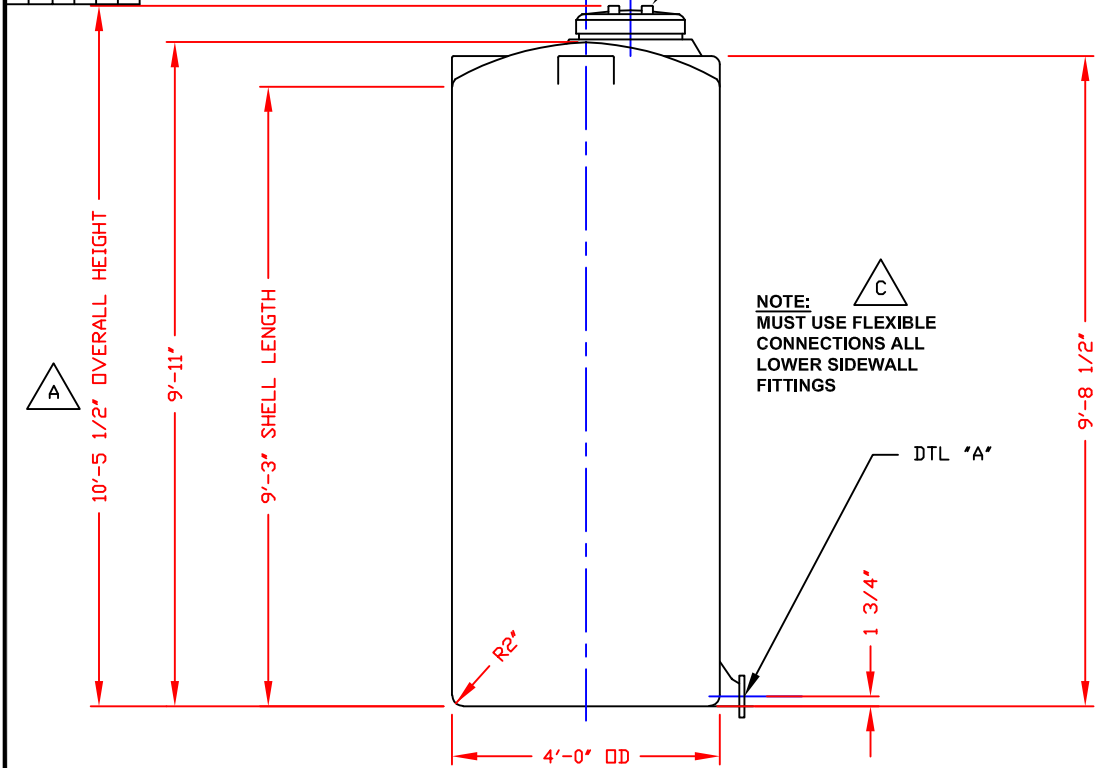
REV "E" ADDED FTG FLATS TO DOME BY:JB 1/7/13 CK:WM
REV "D" REVISED COVER BY:JB 7/26/09 CK:WM
REV "C" REVISED LID BY:MBW 3/3/03 CK:JB
REV "B" ADDED FITTING NOTE BY:MBW 3/3/03 CK:JB
REV "A" ADDED DIMENSION BY:JB 10/8/02 CK:MBW

NON-CONTROLLED COPY
 INFORMATION SUBJECT TO CHANGE WITHOUT NOTICE
 VERIFY REV LEVEL OF PAPER COPY WITH REV LEVEL ON PPC WEB SITE

REV 'A' ADDED DIMENSION BY:JB 10/15/02 CK:MBV
 REV 'B' ADDED NOTE TO DETAIL BY:MBW 1/7/03 CK:JB
 REV 'C' ADDED FITTING NOTE BY:MBW 3/3/03 CK:JB
 REV 'D' REVISED LID BY:MBW 3/3/03 CK:JB
 REV 'E' REVISED IMFD INFORMATION BY:MBW 3/24/04 CK:WH
 REV 'F' ADDED DOME FLATS/REV CAP BY:JB 9/6/15




NOZZLE SCHEDULE & ACCESSORIES					
SERVICE	MK	STOCK NO.	SIZE	FITTING	DEG ELEV



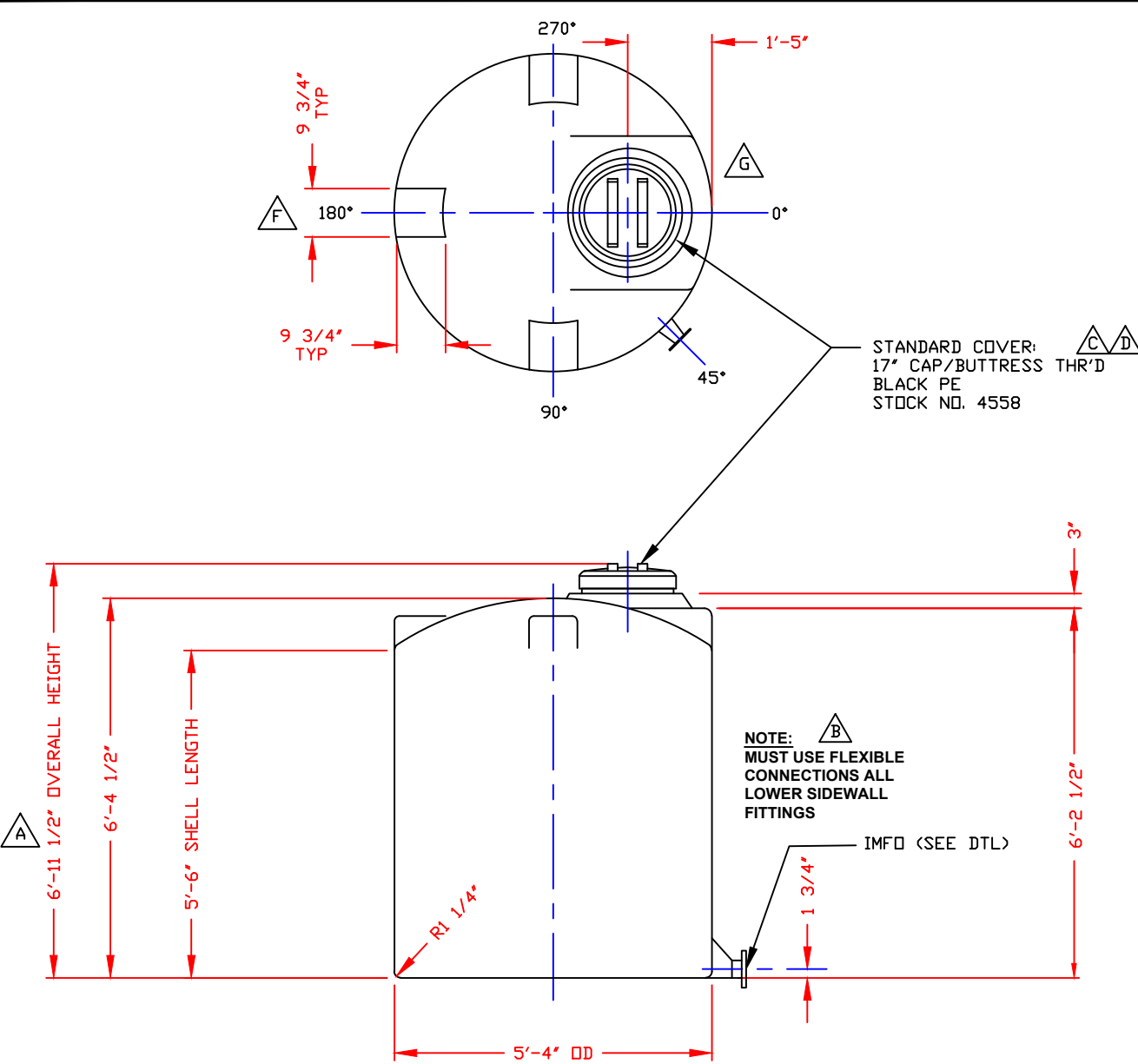
- NOTES**
1. THIS IS A COMPUTER GENERATED DWG. DO NOT REVISE BY HAND.
 2. DIMENSIONS WILL VARY ±3% DUE TO VARIATIONS IN MULTIPLE MOLDS & CONDITIONS PREVALENT DURING MANUFACTURE & USAGE.
 3. MOLDED IN GALLONAGE MARKERS IN MANWAY AREA IN 50 GAL INCREMENTS UP TO 800 GAL.

CALCULATED CAPACITIES/ VOLUME IN U.S. GALLONS		
DESIGN CAP	DOME VOL	TOTAL VOL
854	25	879

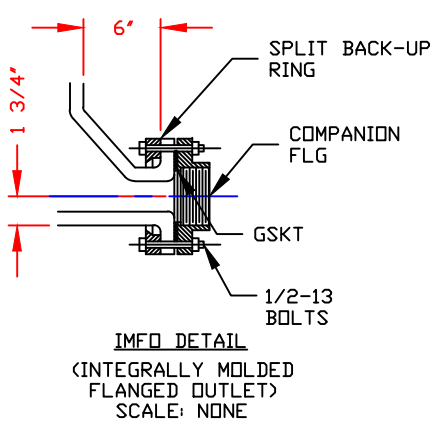
CONFIDENTIAL PROPERTY OF
 POLY PROCESSING COMPANY
 NOT FOR REPRINT OR USE
 WITHOUT PERMISSION

DWG TITLE 850 GALLON IMFD TANK			
SCALE: 1/2"=1'-0"	 Central Region P.O. Box 4158 (71811) 8201 Old Sterlington Rd. Monroe, LA 71203 (504) 343-7565 FAX (504) 343-8795	DR: B. HARPER	
DATE: 09/19/19		CK:	
SHEET 1 OF 1		COMPUTER FILE IMFD-F-00850	REV F

NON-CONTROLLED COPY
 INFORMATION SUBJECT TO CHANGE WITHOUT NOTICE
 VERIFY REV LEVEL OF PAPER COPY WITH REV LEVEL ON PPC WEB SITE



NOZZLE SCHEDULE & ACCESSORIES					
SERVICE	MK	STOCK NO.	SIZE	FITTING	DEG ELEV



- NOTES
- THIS IS A COMPUTER GENERATED DWG. DO NOT REVISE BY HAND.
 - DIMENSIONS WILL VARY ±3% DUE TO VARIATIONS IN MULTIPLE MOLDS & CONDITIONS PREVALENT DURING MANUFACTURE & USAGE.
 - 4" WIDE MOLDED IN GALLONAGE MARKERS @ APPROX 12" IN 100 GAL INCREMENTS UP TO 900 GALLON.

CALCULATED CAPACITIES/ VOLUME IN U.S. GALLONS		
DESIGN CAP	DOME VOL	TOTAL VOL
907	61	968

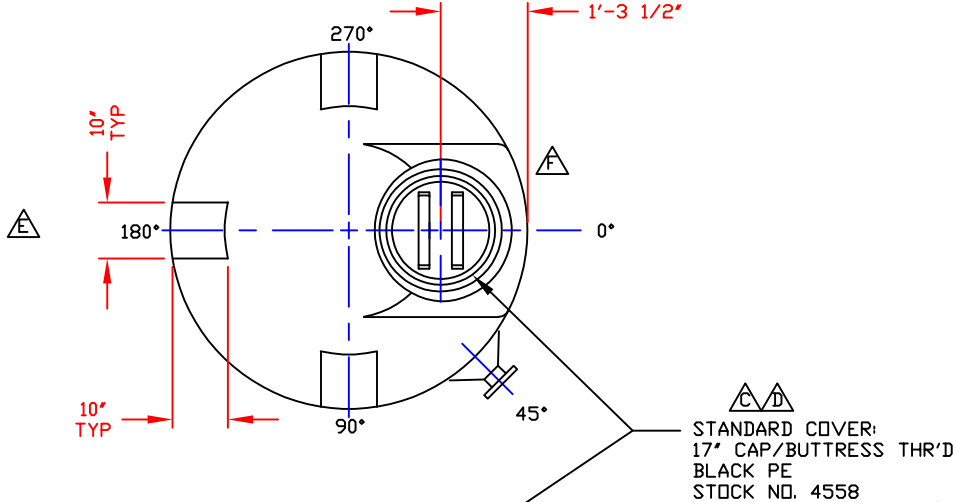
CONFIDENTIAL PROPERTY OF
 POLY PROCESSING COMPANY
 NOT FOR REPRINT OR USE
 WITHOUT PERMISSION

DWG TITLE					
905 GALLON IMFO TANK					
SCALE:	1/2"=1'-0"	 Central Region P.O. Box 459 (71283) 2201 Old Sterlington Rd. Monroe, LA 71203 (504) 343-7142 FAX (504) 343-8795	DR:	B. HARPER	
DATE:	09/18/19		CK:		
SHEET			COMPUTER FILE		REV
1 OF 1			IMFO-F-00905		H

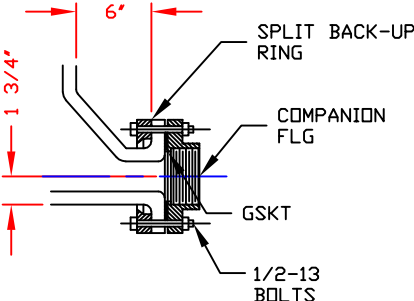
REV "H" CHANGED IMFO FROM 2" TO 3" BY:BH 5/26/23	REV "D" REVISED COVER BY:JB 7/27/09 CK:MW
REV "G" REVISED MWY CASTLE CONFIGURATION BY:JB1 8/12/13 CK:WM	REV "C" REVISED LID BY:MBW 3/3/03 CK:JB
REV "F" ADDED FTG FLATS TO DDOME BY:JB 12/5/12 CK:WM	REV "B" ADDED FITTING NOTE BY:MBW 3/3/03 CK:JB
REV "E" REVISED MANWAY CONFIGURATION BY:JB 1/6/11 CK:WM	REV "A" ADDED DIMENSION BY:JB 10/15/02 CK:MBW

NON-CONTROLLED COPY
 INFORMATION SUBJECT TO CHANGE WITHOUT NOTICE
 VERIFY REV LEVEL OF PAPER COPY WITH REV LEVEL ON PPC WEB SITE

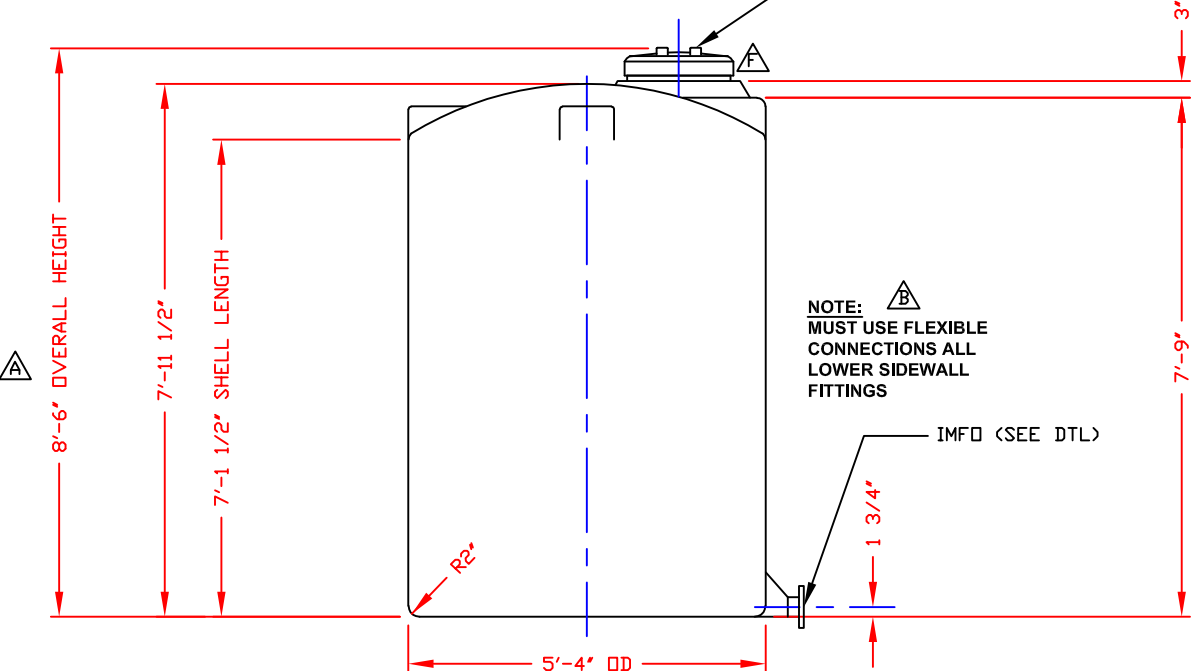
NOZZLE SCHEDULE & ACCESSORIES					
SERVICE	MK	STOCK NO.	SIZE	FITTING	DEG ELEV



STANDARD COVER:
 17" CAP/BUTTRESS THR'D
 BLACK PE
 STOCK NO. 4558



IMFO DETAIL
 (INTEGRALLY MOLDED
 FLANGED OUTLET)
 SCALE: NONE




NOTE:
 MUST USE FLEXIBLE
 CONNECTIONS ALL
 LOWER SIDEWALL
 FITTINGS

- NOTES
1. THIS IS A COMPUTER GENERATED DWG. DO NOT REVISE BY HAND.
 2. DIMENSIONS WILL VARY ±3% DUE TO VARIATIONS IN MULTIPLE MOLDS & CONDITIONS PREVALENT DURING MANUFACTURE & USAGE.
 3. MOLDED IN GALLONAGE MARKERS IN MANWAY AREA IN 100 GAL INCREMENTS UP TO 1200 GAL AVOID WHEN PLACING FITTINGS

CALCULATED CAPACITIES/ VOLUME IN U.S. GALLONS		
DESIGN CAP	DOME VOL	TOTAL VOL
1181	61	1242

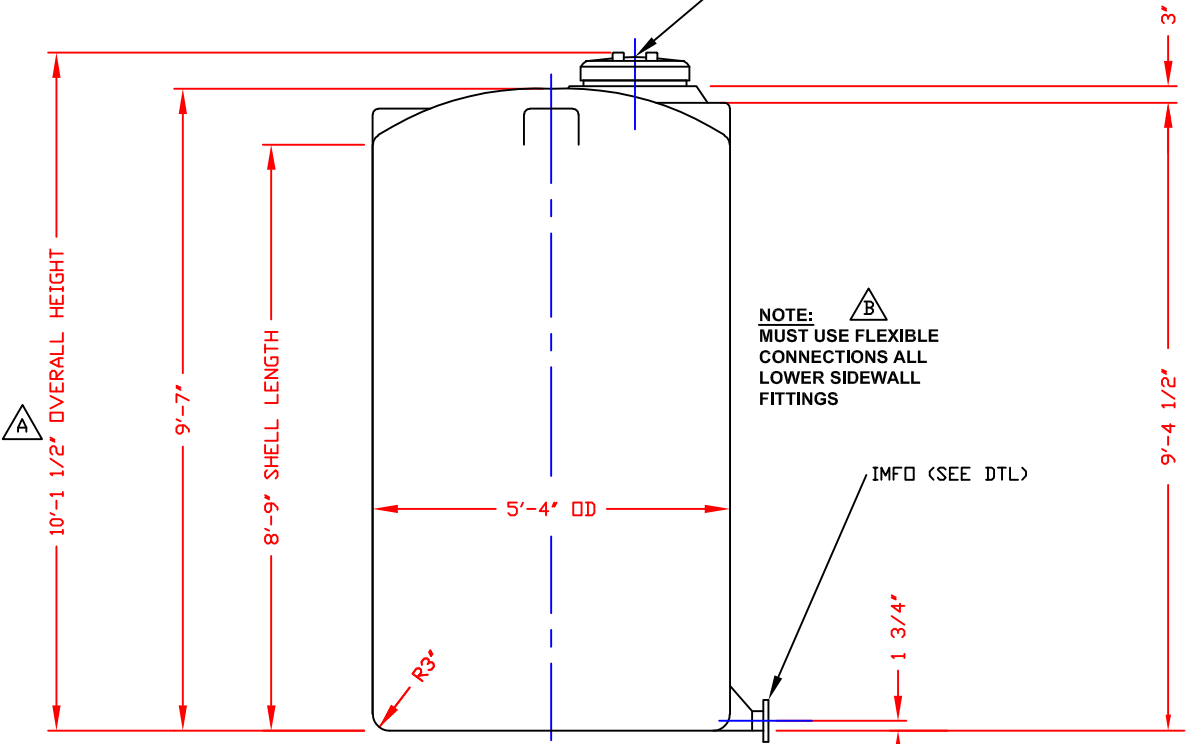
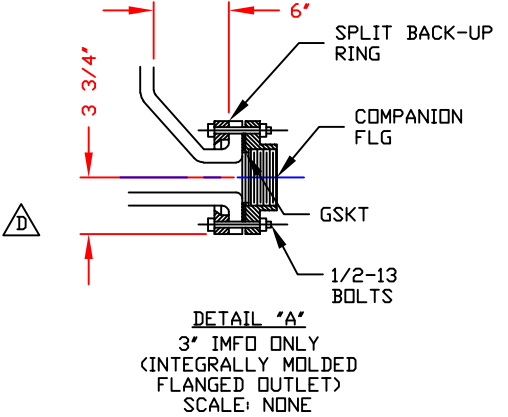
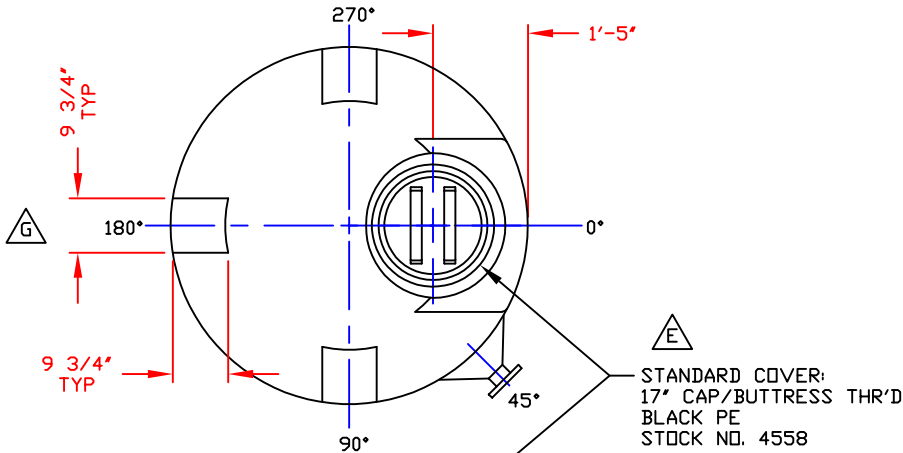
CONFIDENTIAL PROPERTY OF
 POLY PROCESSING COMPANY
 NOT FOR REPRINT OR USE
 WITHOUT PERMISSION

DWG TITLE		1150 GALLON IMFO TANK		
SCALE:	1/2"=1'-0"	 Central Region P.O. Box 4150 (71811) 2501 Oak Street Harvey, LA 70059 (504) 343-7565 FAX (504) 343-8795	DR:	B. HARPER
DATE:	09/19/19		CK:	
		SHEET	COMPUTER FILE	REV
		1 OF 1	IMFO-F-01150	F

REV "F" REVISE MANWAY WIDTH BY:BT 01/10/19 CK:WM
REV "E" ADDED FTG FLAT TO DOME BY:JB 12/31/12 CK:WM
REV "D" REVISED COVER BY:JB 7/27/09 CK:WM
REV "C" REVISED LID BY:MBW 3/3/03 CK:JB
REV "C" ADDED FITTING NOTE BY:MBW 3/3/03 CK:JB
REV "A" ADDED DIMENSION BY:JB 10/15/02 CK:MBW

NON-CONTROLLED COPY
 INFORMATION SUBJECT TO CHANGE WITHOUT NOTICE
 VERIFY REV LEVEL OF PAPER COPY WITH REV LEVEL ON PPC WEB SITE


NOZZLE SCHEDULE & ACCESSORIES					
SERVICE	MK	STOCK NO.	SIZE	FITTING	DEG ELEV



- NOTES**
- THIS IS A COMPUTER GENERATED DWG. DO NOT REVISE BY HAND.
 - DIMENSIONS WILL VARY ±3% DUE TO VARIATIONS IN MULTIPLE MOLDS & CONDITIONS PREVALENT DURING MANUFACTURE & USAGE.
 - MOLDED IN GALLONAGE MARKERS @ 0° IN 100 GAL INCREMENTS UP TO 1400 GAL.

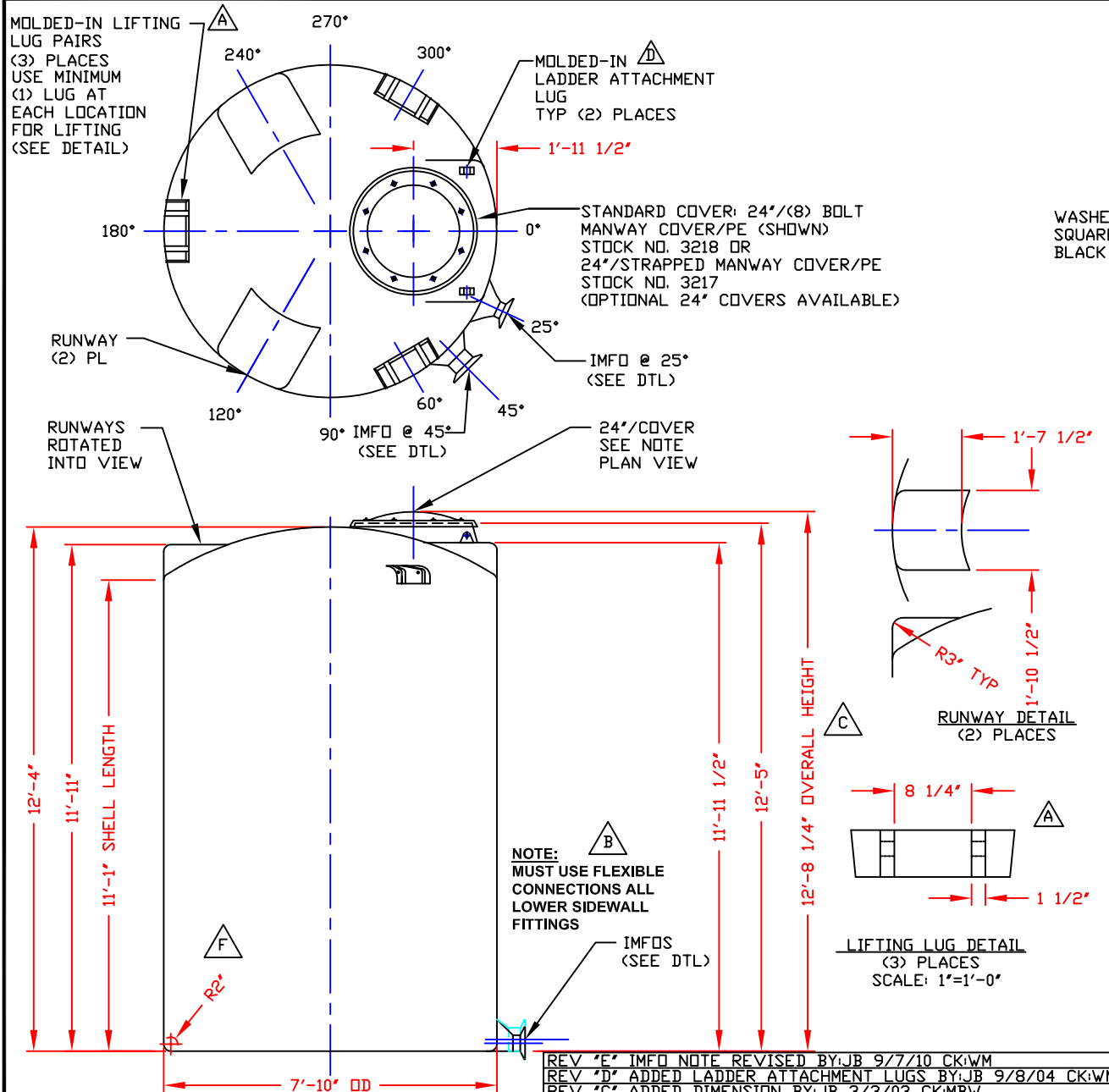
CALCULATED CAPACITIES/ VOLUME IN U.S. GALLONS		
DESIGN CAP	DOME VOL	TOTAL VOL
1438	61	1499

CONFIDENTIAL PROPERTY OF
 POLY PROCESSING COMPANY
 NOT FOR REPRINT OR USE
 WITHOUT PERMISSION

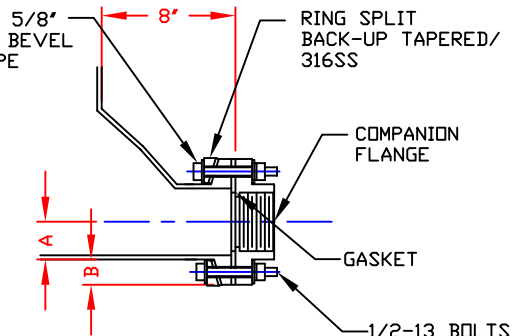
DWG TITLE			
1400 GALLON IMFO TANK			
SCALE:	1/2"=1'-0"	 Central Region P.O. Box 4159 (71212) 2901 Old Sterlington Rd. Monroe, LA 71203 (504) 343-7565 FAX (504) 343-8795	DR:
DATE:	09/19/19		CK:
SHEET	COMPUTER FILE	REV	
1 OF 1	IMFO-F-01400	G	

REV 'G' ADDED FTG FLAT TO DOME BY:JB 12/4/12 CK:WM	REV 'C' REVISED LID BY:MBW 3/3/03 CK:JB
REV 'F' REVISED MANWAY CONFIGURATION BY:JB 1/6/11 CK:WM	REV 'B' ADDED FITTING NOTE BY:MBW 3/3/03 CK:JB
REV 'E' REVISED COVER BY:JB 7/26/09 CK:MW	REV 'A' ADDED DIMENSION BY:JB 10/16/02 CK:MBW
REV 'D' CORRECTED IMFO DETAIL BY:MBW 2/14/06 CK:JB	

NON-CONTROLLED COPY
 INFORMATION SUBJECT TO CHANGE WITHOUT NOTICE
 VERIFY REV LEVEL OF PAPER COPY WITH REV LEVEL ON PPC WEB SITE



NOZZLE SCHEDULE & ACCESSORIES						
SERVICE	MK	STOCK NO.	SIZE	FITTING	DEG	ELEV



IMFO NOZZLE DETAIL
 (INTEGRALLY MOLDED FLANGED OUTLET)
 SCALE: NONE

DIMENSION CHART		
PIPE SIZE	A	B
4"	2 1/4"	2 1/4"
6"	3 5/16"	2 3/16"

NOTE: (2) IMFO NOZZLES MAY BE MOLDED IN TANK
 (1) @ 25° & (1) @ 45°
 4" IS STANDARD ON BOTH
 (1) 6" IS AVAILABLE @ EITHER LOCATION, BUT ONLY (1)
 EITHER OR BOTH MAY BE BLOCKED OFF

NOTES:
 1. THIS IS A COMPUTER GENERATED DRAWING. DO NOT REVISE BY HAND
 2. DIMENSIONS WILL VARY ±3% DUE TO VARIATIONS IN MULTIPLE MOLDS AND CONDITIONS PREVELANT DURING MANUFACTURE AND USAGE.
 3. MOLDED IN GALLONAGE MARKERS IN 200 GAL INCREMENTS UP TO 4000 GAL IN MANWAY AREA.

CALCULATED CAPACITIES/ VOLUME IN U.S. GALLONS		
DESIGN CAP	DOME VOL	TOTAL VOL
3909	192	4101

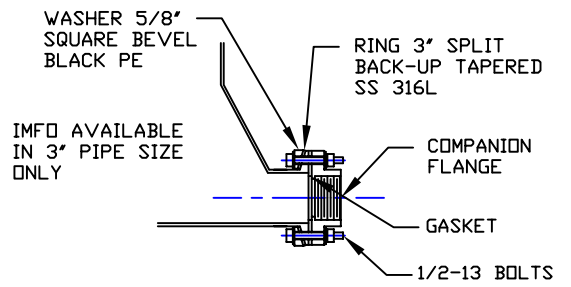
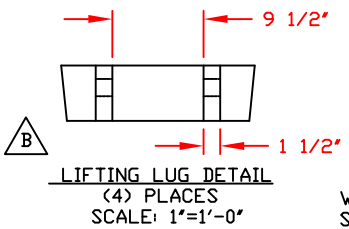
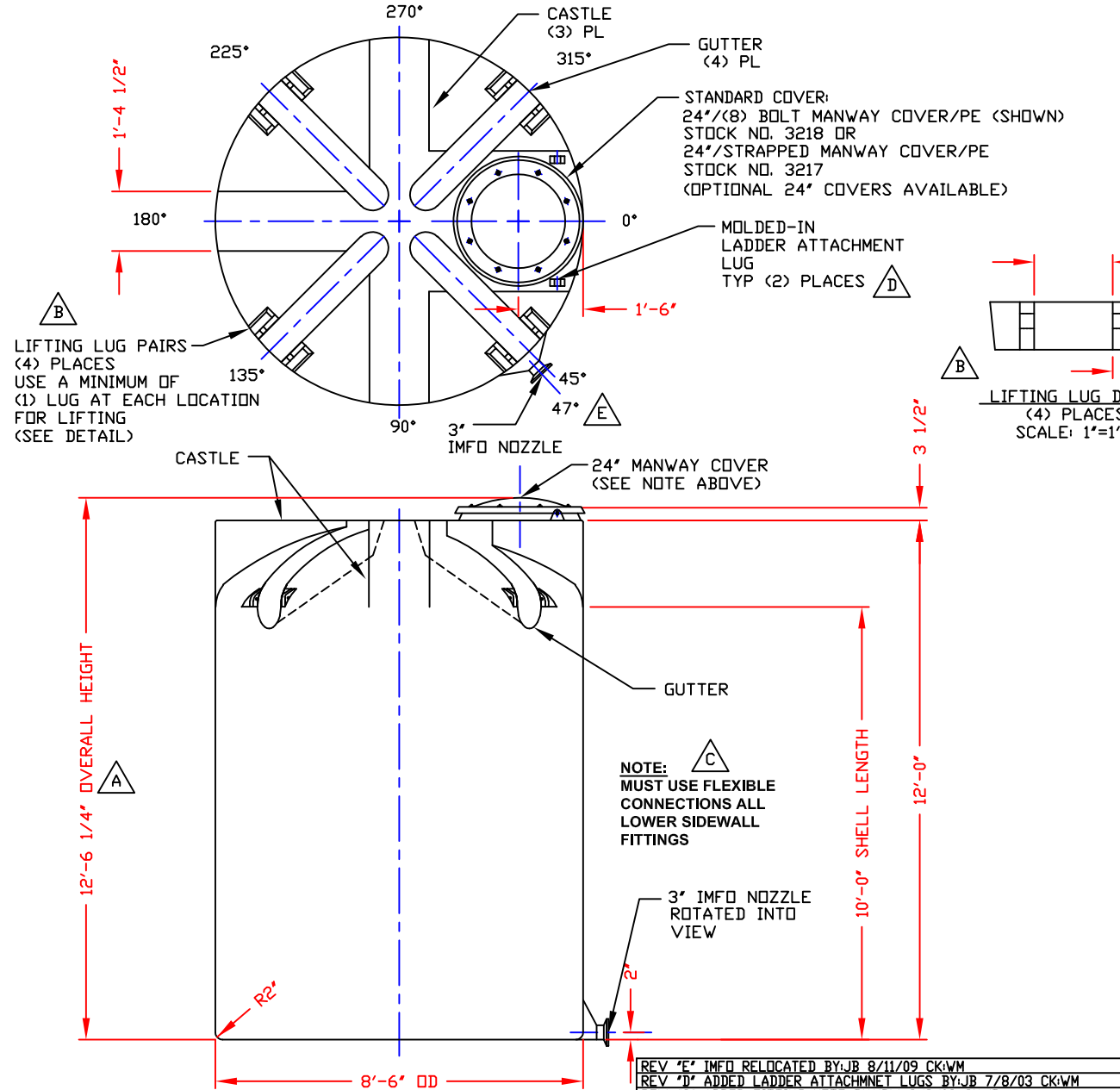
CONFIDENTIAL PROPERTY OF
 POLY PROCESSING COMPANY
 NOT FOR REPRINT OR USE
 WITHOUT PERMISSION

DWG TITLE 3900 GALLON DOUBLE IMFO TANK			DR: B. HARPER
SCALE: 3/8"=1'-0"		Central Region P.O. Box 4150 (71211) 800 Old Sternington Rd. Monroe, LA 70203 (504) 343-7565 FAX (504) 343-8795	
DATE: 09/19/19		CK: 	
SHEET 1 OF 1		COMPUTER FILE IMFO-F-03900	REV G

REV "G" REVISED IMFO NOTE BY:JB 4/8/13 CK:WM
 REV "F" CHANGED KNUCKLE RAD. TO 2" BT 7/19/12 CK:WM
 REV "E" IMFO NOTE REVISED BY:JB 9/7/10 CK:WM
 REV "D" ADDED LADDER ATTACHMENT LUGS BY:JB 9/8/04 CK:MBW
 REV "C" ADDED DIMENSION BY:JB 3/3/03 CK:MBW
 REV "B" ADDED FITTING NOTE BY:JB 2/28/03 CK:MBW
 REV "A" ADDED LIFTING LUGS & DETAIL BY:JB 2/28/03 CK:WM

NON-CONTROLLED COPY
 INFORMATION SUBJECT TO CHANGE WITHOUT NOTICE
 VERIFY REV LEVEL OF PAPER COPY WITH REV LEVEL ON PPC WEB SITE

NOZZLE SCHEDULE & ACCESSORIES					
SERVICE	MK	STOCK NO.	SIZE	FITTING	DEG ELEV



- NOTES**
1. THIS IS A COMPUTER GENERATED DWG. DO NOT REVISE BY HAND.
 2. DIMENSIONS WILL VARY ±3% DUE TO VARIATIONS IN MULTIPLE MOLDS & CONDITIONS PREVALENT DURING MANUFACTURE & USAGE.
 3. NO MOLDED IN GALLONAGE MARKERS THIS TANK.

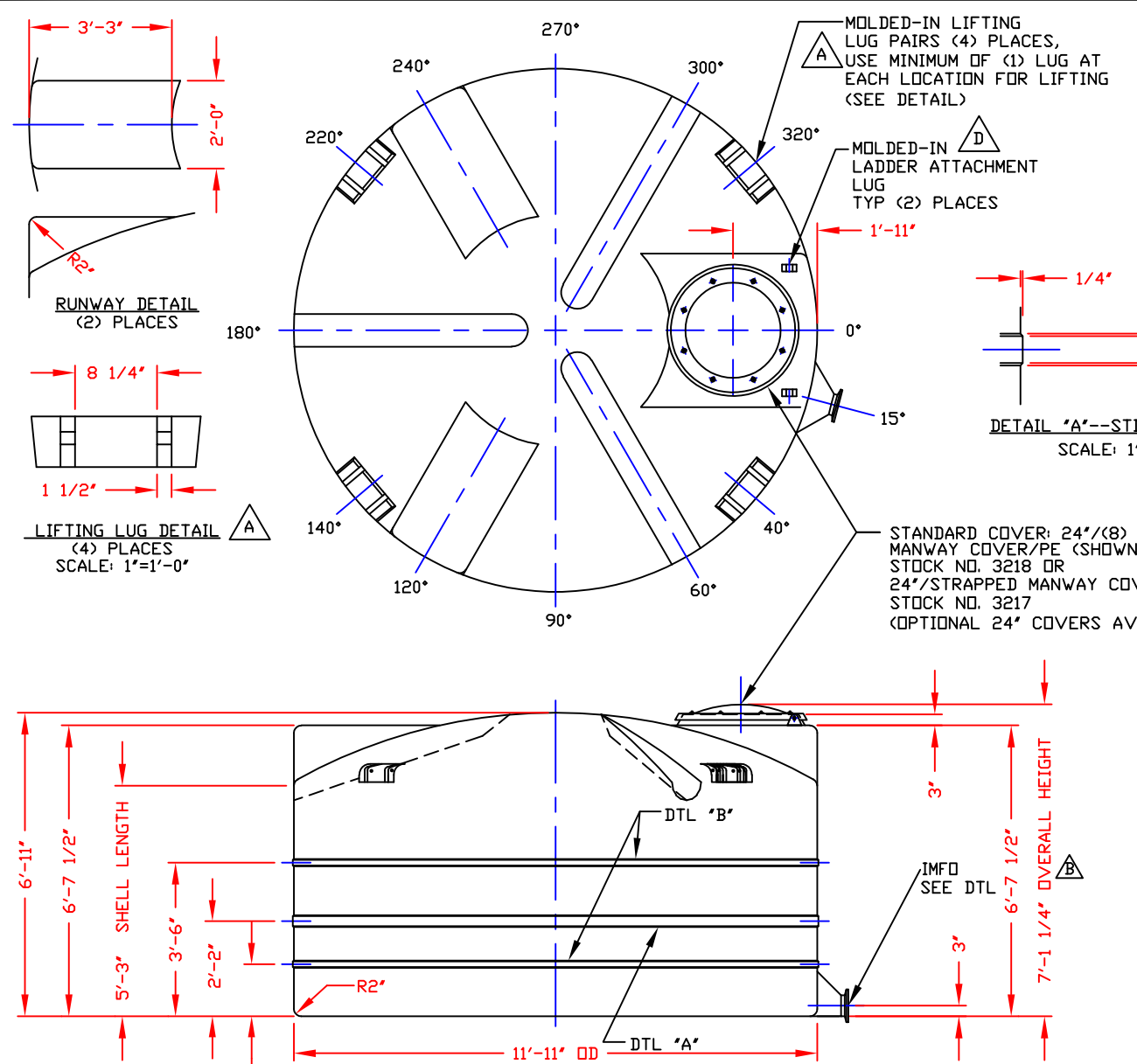
CALCULATED CAPACITIES/ VOLUME IN U.S. GALLONS		
DESIGN CAP	DOME VOL	TOTAL VOL
4162	245	4407

CONFIDENTIAL PROPERTY OF
 POLY PROCESSING COMPANY
 NOT FOR REPRINT OR USE
 WITHOUT PERMISSION

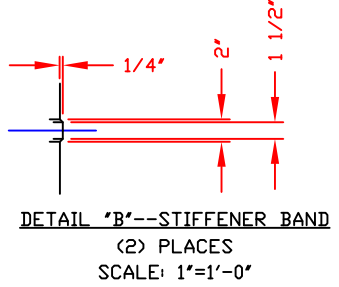
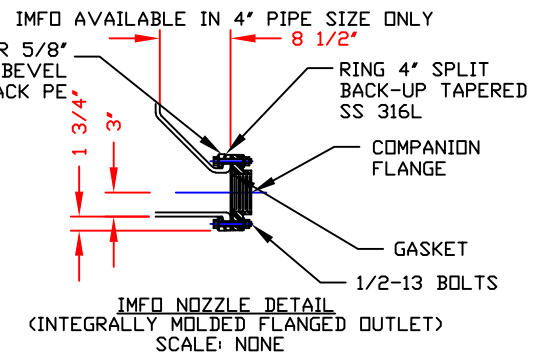
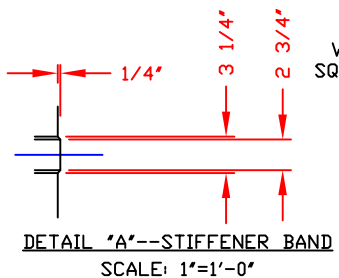
DWG TITLE		4150 GALLON IMFO TANK		
SCALE:	3/8"=1'-0"	 Central Region P.O. Box 4150 (71811) 8000 Old Sterlington Rd. Monroe, LA 71203 (504) 343-7565 FAX (504) 343-8795	DR:	B. HARPER
DATE:	09/19/19		CK:	
SHEET		COMPUTER FILE	REV	
1 OF 1		IMFO-F-04150	E	

- REV 'E' IMFO RELOCATED BY:JB 8/11/09 CK:WM
- REV 'D' ADDED LADDER ATTACHMENT LUGS BY:JB 7/8/03 CK:WM
- REV 'C' ADDED FITTING NOTE BY:MBW 3/3/03 CK:JB
- REV 'B' ADDED LIFTING LUGS & DETAIL BY:JB 1/16/03 CK:WM
- REV 'A' ADDED DIMENSION BY:JB 10/18/02 CK:MBW

NON-CONTROLLED COPY
 INFORMATION SUBJECT TO CHANGE WITHOUT NOTICE
 VERIFY REV LEVEL OF PAPER COPY WITH REV LEVEL ON PPC WEB SITE



NOZZLE SCHEDULE & ACCESSORIES					
SERVICE	MK	STOCK NO.	SIZE	FITTING	DEG ELEV



- NOTES**
- THIS IS A COMPUTER GENERATED DWG. DO NOT REVISE BY HAND.
 - DIMENSIONS WILL VARY ±3% DUE TO VARIATIONS IN MULTIPLE MOLDS & CONDITIONS PREVALENT DURING MANUFACTURE & USAGE.
 - NO MOLDED IN GALLONAGE MARKERS THIS TANK.

CALCULATED CAPACITIES/ VOLUME IN U.S. GALLONS		
DESIGN CAP	DOME VOL	TOTAL VOL
4322	675	4997

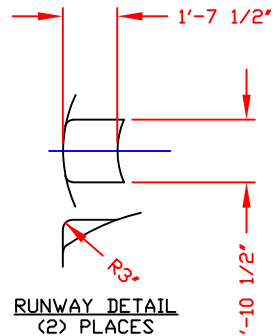
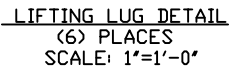
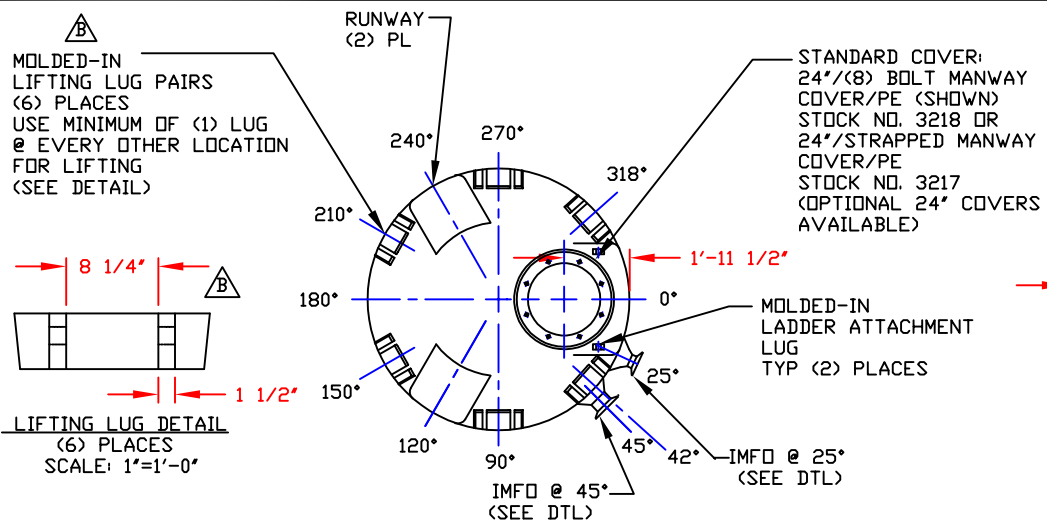
CONFIDENTIAL PROPERTY OF
 POLY PROCESSING COMPANY
 NOT FOR REPRINT OR USE
 WITHOUT PERMISSION

NOTE:
 MUST USE FLEXIBLE
 CONNECTIONS ALL
 LOWER SIDEWALL
 FITTINGS

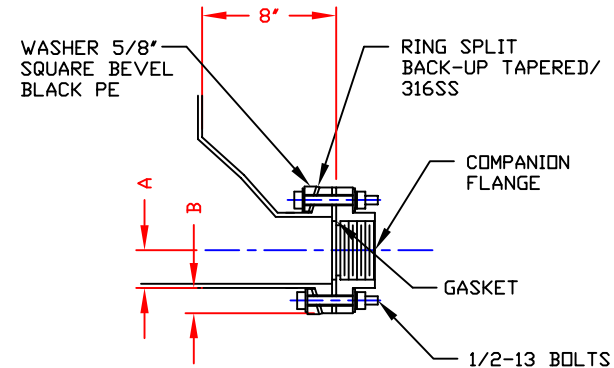
REV "E" DOME CONFIGURATION REVISED BY:JB 7/29/10 CK:WM
REV "D" ADDED LADDER ATTACHMENT LUGS BY:JB 5/14/04 CK:WM
REV "C" ADDED FITTING NOTE BY:MBW 3/3/03 CK:JB
REV "B" ADDED DIMENSION BY:JB 10/18/02 CK:MBW
REV "A" ADDED LIFTING LUGS & DETAIL BY:JB 9/24/02 CK:WM

DWG TITLE		4300 GALLON IMFO TANK			
SCALE:	3/8"=1'-0"		Central Region P.O. Box 4159 (71812) 8201 Old Stearnsington Rd. Harvey, LA 70059 (504) 343-7565 FAX (504) 343-8795	DR:	B. HARPER
DATE:	09/19/19		CK:		
		SHEET	COMPUTER FILE	REV	
		1 OF 1	IMFO-F-04300	E	

NON-CONTROLLED COPY
 INFORMATION SUBJECT TO CHANGE WITHOUT NOTICE
 VERIFY REV LEVEL OF PAPER COPY WITH REV LEVEL ON PPC WEB SITE



NOZZLE SCHEDULE & ACCESSORIES					
SERVICE	MK	STOCK NO.	SIZE	FITTING	DEG ELEV



DIMENSION CHART		
PIPE SIZE	A	B
4"	2 1/4"	2 1/4"
6"	3 5/16"	2 3/16"

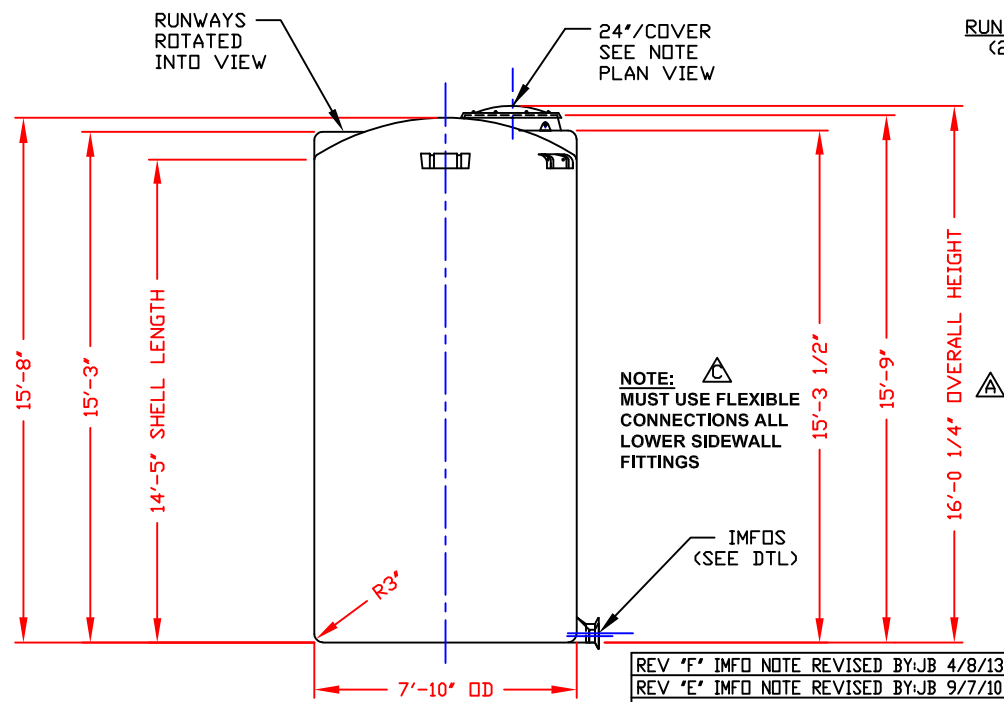
IMFO NOZZLE DETAIL
 (INTEGRALLY MOLDED FLANGED OUTLET)
 SCALE: NONE

NOTE: (2) IMFO NOZZLES MAY BE MOLDED IN TANK
 (1) @ 25° & (1) @ 45°
 4" IS STANDARD ON BOTH
 (1) 6" IS AVAILABLE @ EITHER LOCATION, BUT ONLY (1) EITHER OR BOTH MAY BE BLOCKED OFF

- NOTES
- THIS IS A COMPUTER GENERATED DWG. DO NOT REVISE BY HAND.
 - DIMENSIONS WILL VARY ±3% DUE TO VARIATIONS IN MULTIPLE MOLDS AND CONDITIONS PREVELANT DURING MANUFACTURE AND USAGE.
 - MOLDED IN GALLONAGE MARKERS IN 200 GAL INCREMENTS UP TO 5000 GAL IN MANWAY AREA.

CALCULATED CAPACITIES/ VOLUME IN U.S. GALLONS		
DESIGN CAP	DOME VOL	TOTAL VOL
5052	192	5244

CONFIDENTIAL PROPERTY OF
 POLY PROCESSING COMPANY
 NOT FOR REPRINT OR USE
 WITHOUT PERMISSION

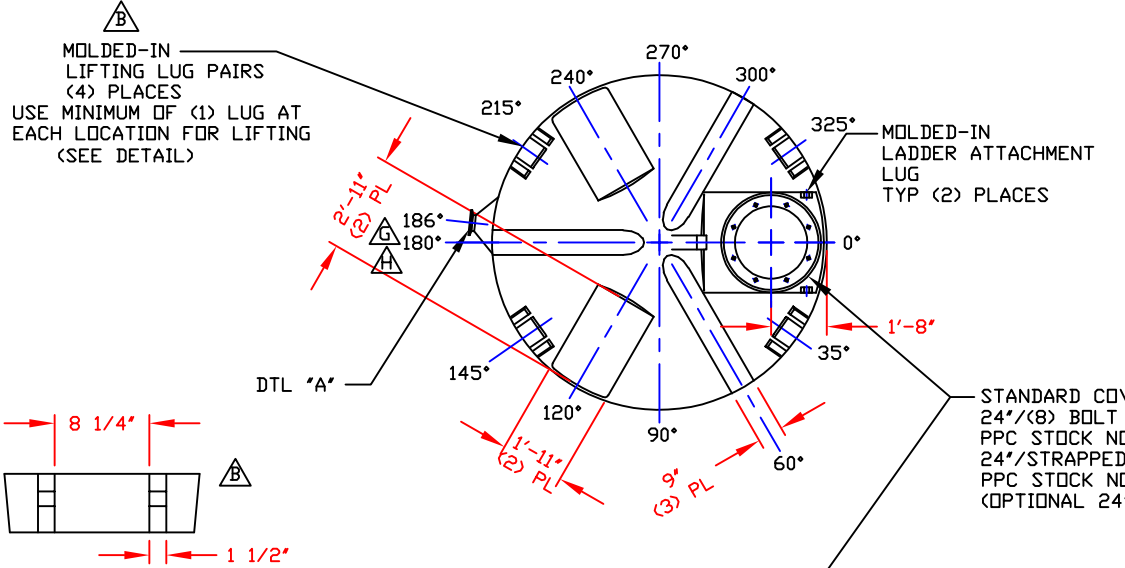


REV "F" IMFO NOTE REVISED BY:JB 4/8/13 CK:WM
REV "E" IMFO NOTE REVISED BY:JB 9/7/10 CK:WM
REV "D" ADDED LADDER ATTACHMENT LUGS BY:JB 1/25/05 CK:WM
REV "C" ADDED FITTING NOTE BY:MBW 3/3/03 CK:JB
REV "B" ADDED LIFTING LUGS & DETAIL BY:JB 1/13/03 CK:WM
REV "A" ADDED DIMENSION BY:JB 10/21/02 CK:MBW

DWG TITLE		5050 GALLON DOUBLE IMFO TANK	
SCALE: 1/4"=1'-0"		Central Region P.O. Box 4159 (71811) 8201 Old Sterlington Rd. Monroe, LA 71203 (504) 343-7565 FAX (504) 343-8795	DR: B. HARPER
DATE: 09/19/19		CK:	
SHEET		COMPUTER FILE	REV
1 OF 1		IMFO-F-05050	F

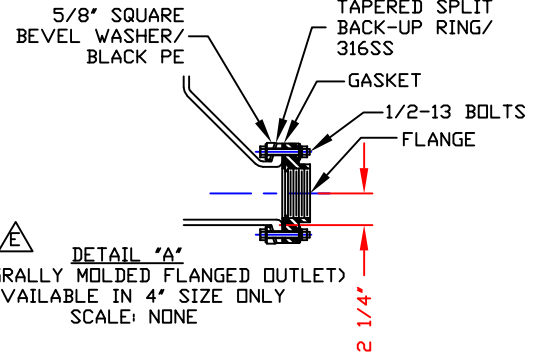
NON-CONTROLLED COPY
 INFORMATION SUBJECT TO CHANGE WITHOUT NOTICE
 VERIFY REV LEVEL OF PAPER COPY WITH REV LEVEL ON PPC WEB SITE

NOZZLE SCHEDULE & ACCESSORIES					
SERVICE	MK	STOCK NO.	SIZE	FITTING	DEG ELEV



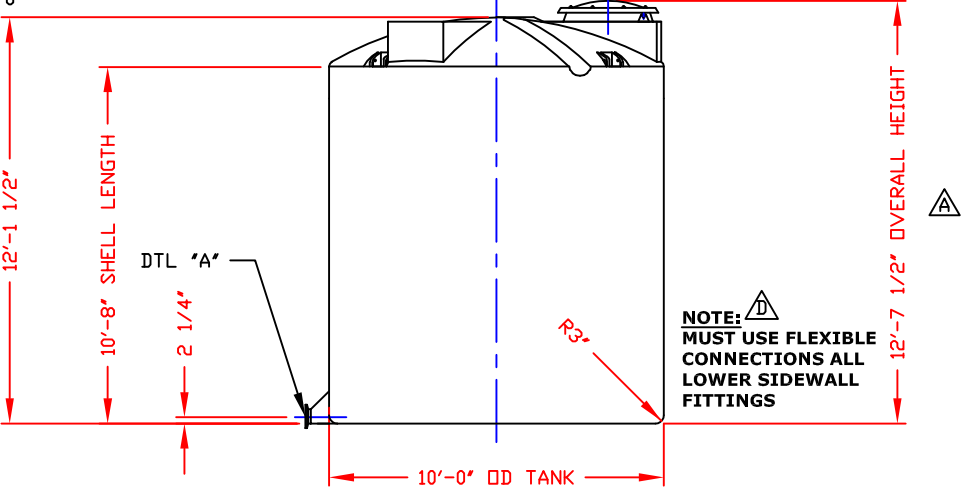
LIFTING LUG DETAIL
 (4) PLACES
 SCALE: 1"=1'-0"

STANDARD COVER:
 24"/(8) BOLT MANWAY COVER/PE (SHOWN)
 PPC STOCK NO. 3218 OR
 24"/STRAPPED MANWAY COVER/PE
 PPC STOCK NO. 3217
 (OPTIONAL 24" COVERS AVAILABLE)



DETAIL 'A'
 (INTEGRALLY MOLDED FLANGED OUTLET)
 AVAILABLE IN 4" SIZE ONLY
 SCALE: NONE

- NOTES**
1. THIS IS A COMPUTER GENERATED DWG. DO NOT REVISE BY HAND.
 2. DIMENSIONS WILL VARY ±3% DUE TO VARIATIONS IN MULTIPLE MOLDS & CONDITIONS PREVALENT DURING MANUFACTURE & USAGE.
 3. NO MOLDED IN GALLONAGE MARKERS THIS TANK.



CALCULATED CAPACITIES/ VOLUME IN U.S. GALLONS		
DESIGN CAP	DOME VOL	TOTAL VOL
6126	470	6596

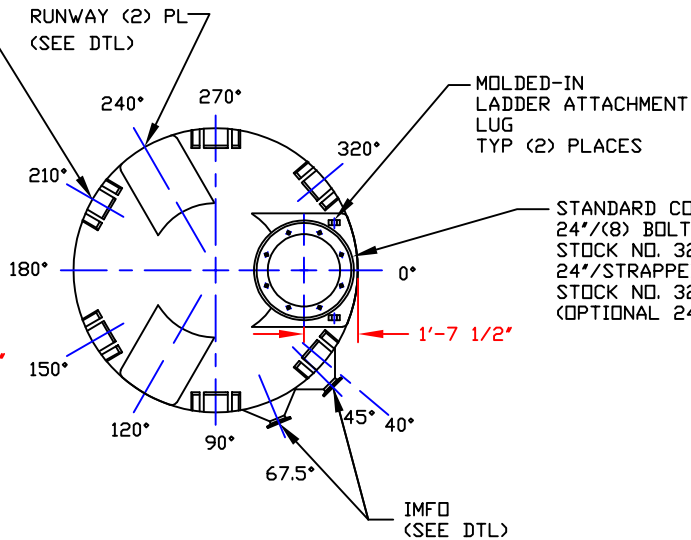
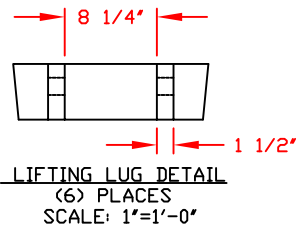
CONFIDENTIAL PROPERTY OF
 POLY PROCESSING COMPANY
 NOT FOR REPRINT OR USE
 WITHOUT PERMISSION

DWG TITLE 6100 GALLON IMFO TANK			
SCALE: 1/4"=1'-0"		Western Region P.O. Box 80 8035 South Ash Street French Camp, GA 30521 (209) 962-4964 FAX (209) 962-6455	DR: B. HARPER
DATE: 09/25/19		CK:	
SHEET 1 OF 1		COMPUTER FILE IMFO-F-06100	REV H

REV "G" REVISED IMFO LOCATION BY:JB 7/24/09 CK:WM
REV "F" REVISED FOR MOLD MODIFICATION BY:JB 6/16/05 CK:WM
REV "E" REVISED IMFO STYLE BY:JB 4/30/03 CK:WM
REV "D" ADDED FITTING NOTE BY:JB 2/27/03 CK:MBW
REV "C" REVISED STOCK NUMBER BY:JB 2/27/03 CK:MBW
REV "B" ADDED LIFTING LUGS & DETAIL BY:JB 10/31/02 CK:WM
REV "A" ADDED DIMENSION BY:JB 10/21/02 CK:MBW

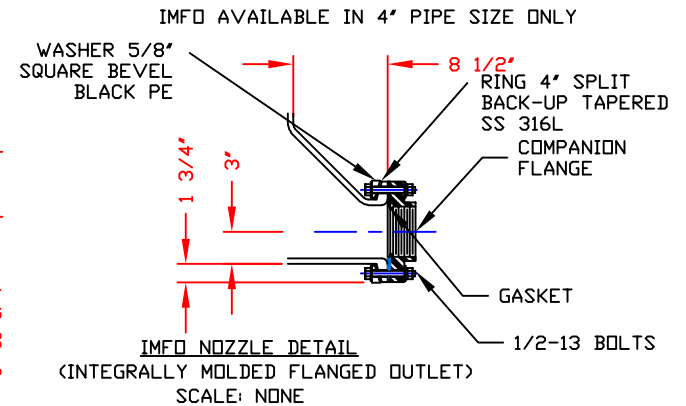
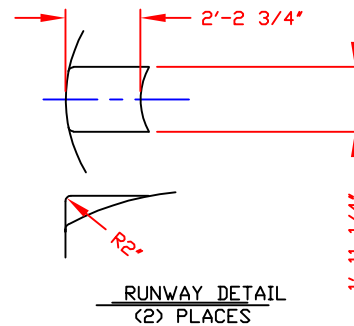
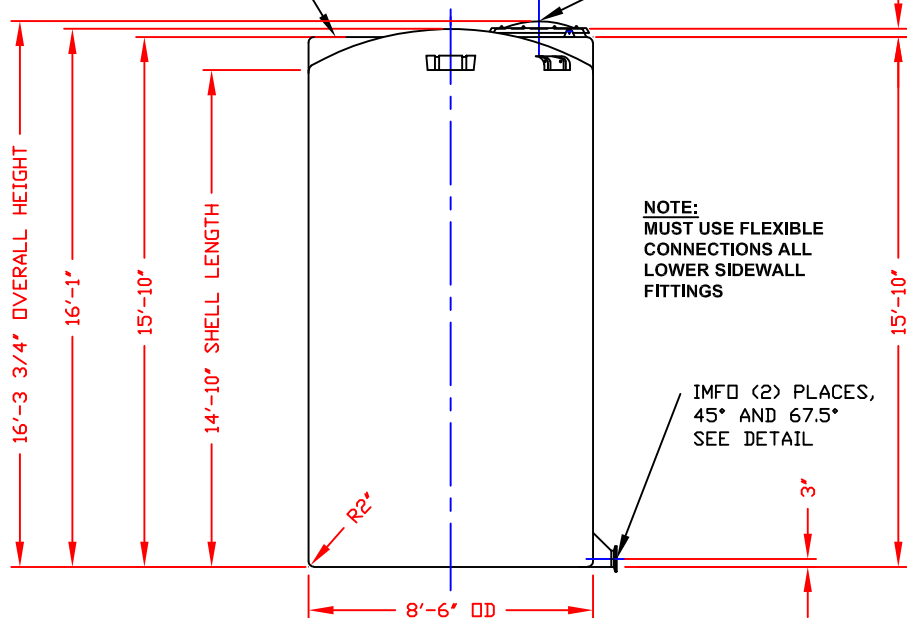
REV "H" REVISED IMFO LOCATION BY:JB 5/23/16 CK:WM

MOLDED-IN LIFTING LUG PAIRS (6) PLACES
USE MINIMUM OF (3) LUG PAIRS @ ALTERNATING LOCATIONS FOR LIFTING (SEE DETAIL)



RUNWAY

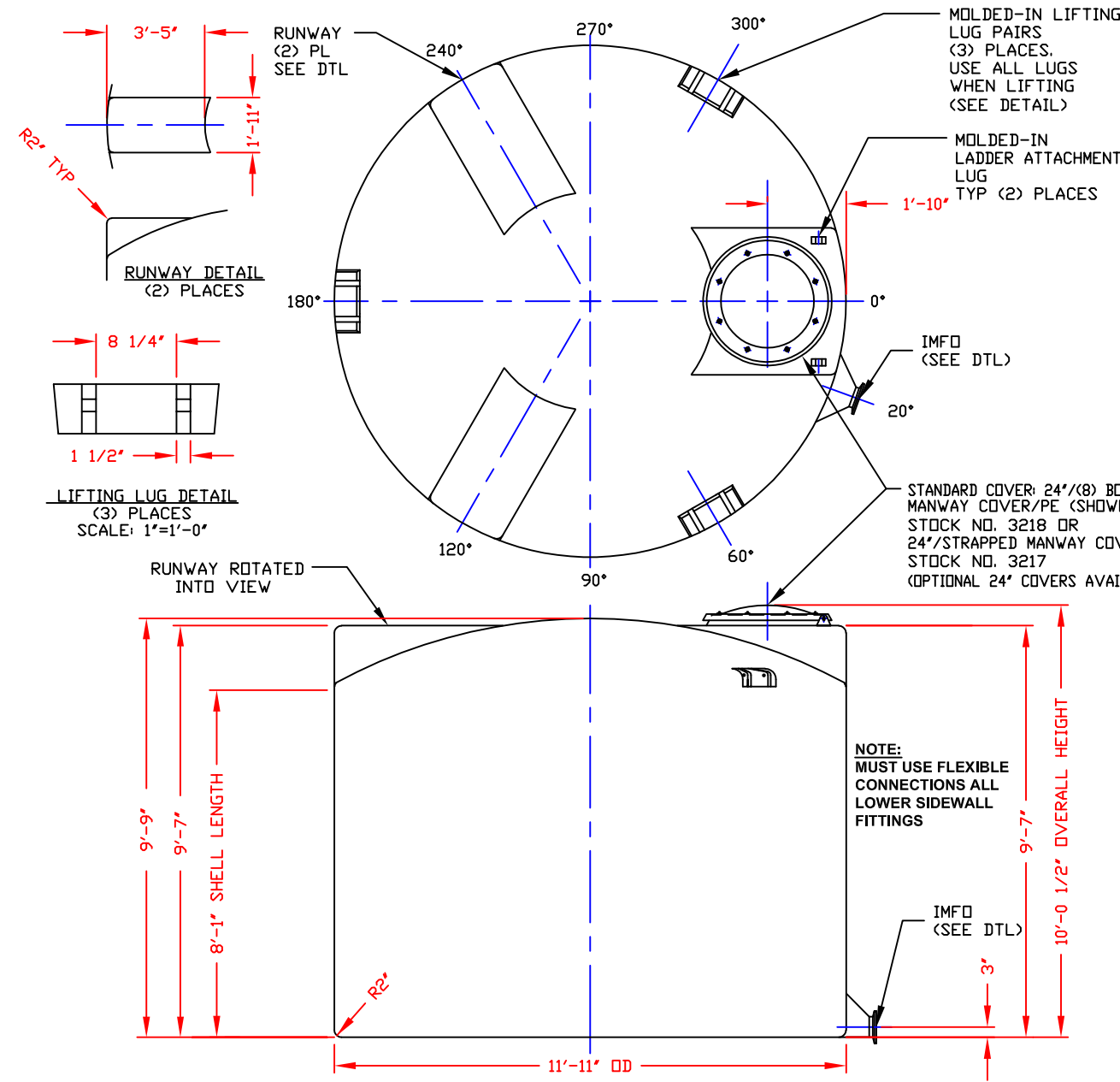
24"/COVER
SEE NOTE
PLAN VIEW



- NOTES:
1. THIS IS A COMPUTER GENERATED DWG. DO NOT REVISE BY HAND.
 2. DIMENSIONS WILL VARY ±3% DUE TO VARIATIONS IN MULTIPLE MOLDS & CONDITIONS PREVALENT DURING MANUFACTURE & USAGE.
 3. MOLDED IN GALLONAGE MARKERS @ 15" UP TO 5800 GALLONS.

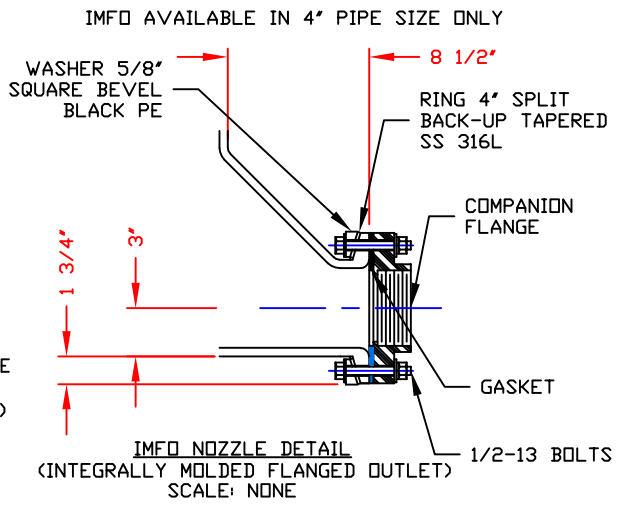
DWG TITLE		6115 GALLON DOUBLE IMFO TANK		
SCALE:	1/4"=1'-0"		DR: B. HARPER	
DATE:	09/25/19		Central Region P.O. Box 4158 (71212) 2201 Old 21st/Highway Rd. Monroe, LA 71203 (504) 343-7565 FAX (504) 343-8795	CK:
CALCULATED CAPACITIES/ VOLUME IN U.S. GALLONS DESIGN CAP DOME VOL TOTAL VOL 6115 235 6350		SHEET	COMPUTER FILE	REV
		1 OF 1	IMFO-F-06115	-

NON-CONTROLLED COPY
 INFORMATION SUBJECT TO CHANGE WITHOUT NOTICE
 VERIFY REV LEVEL OF PAPER COPY WITH REV LEVEL ON PPC WEB SITE



NOZZLE SCHEDULE & ACCESSORIES

SERVICE	MK	STOCK NO.	SIZE	FITTING	DEG	ELEV



NOTE:
 MUST USE FLEXIBLE CONNECTIONS ALL LOWER SIDEWALL FITTINGS

- NOTES**
- THIS IS A COMPUTER GENERATED DWG. DO NOT REVISE BY HAND.
 - DIMENSIONS WILL VARY ±3% DUE TO VARIATIONS IN MULTIPLE MOLDS & CONDITIONS PREVALENT DURING MANUFACTURE & USAGE.
 - NO MOLDED IN GALLONAGE MARKERS THIS TANK.

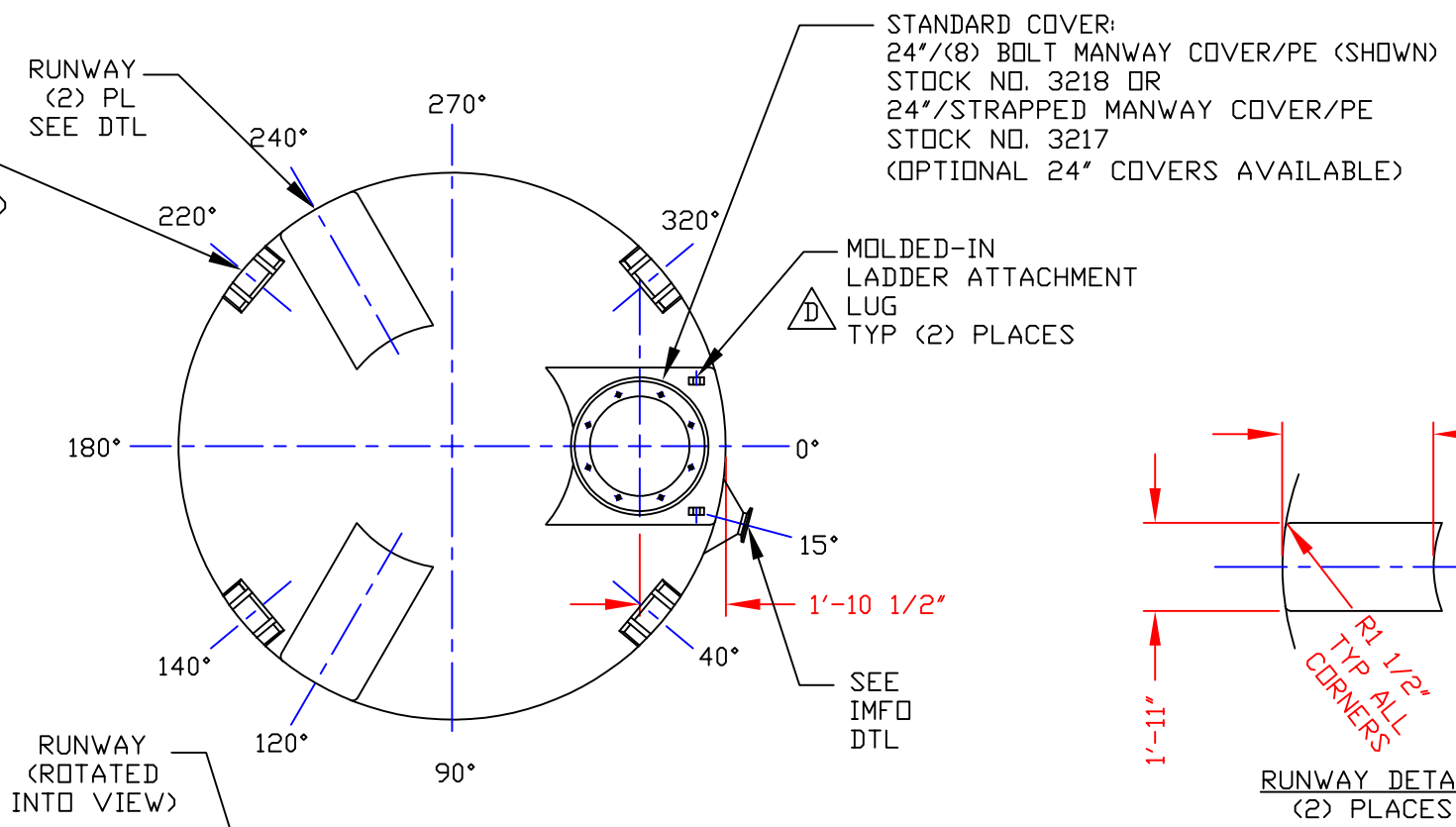
CALCULATED CAPACITIES/ VOLUME IN U.S. GALLONS		
DESIGN CAP	DOME VOL	TOTAL VOL
6639	675	7314

CONFIDENTIAL PROPERTY OF
 POLY PROCESSING COMPANY
 NOT FOR REPRINT OR USE
 WITHOUT PERMISSION

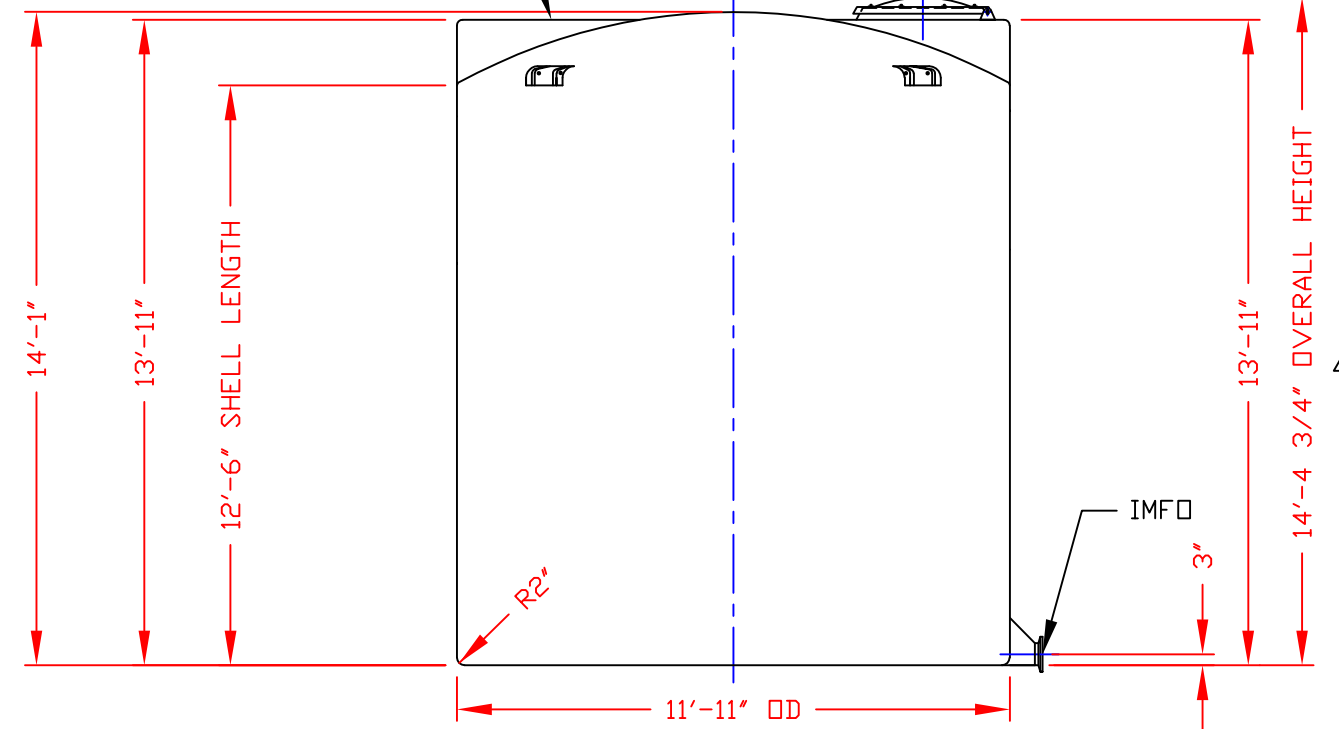
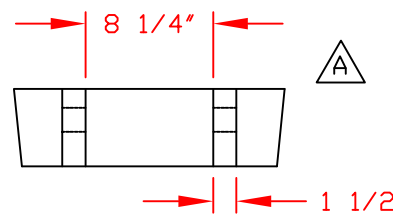
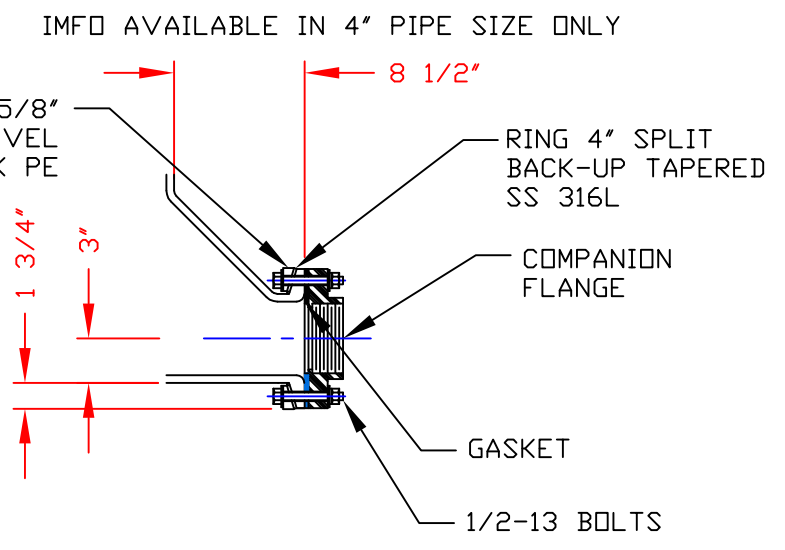
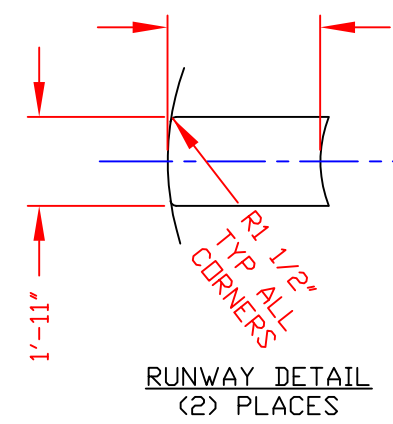
DWG TITLE
 6650 GALLON IMFO TANK

SCALE: 3/8"=1'-0"	<p>POLYPROCESSING COMPANY</p>	Central Region P.O. Box 4150 (71211) 8201 Old Stoneington Rd. Harvey, LA 70059 (504) 343-7665 FAX (504) 343-8795	DR: B. HARPER
DATE: 09/25/19		CK:	
SHEET 1 OF 1		COMPUTER FILE	REV -

NON-CONTROLLED COPY
 INFORMATION SUBJECT TO CHANGE WITHOUT NOTICE
 VERIFY REV LEVEL OF PAPER COPY WITH REV LEVEL ON PPC WEB SITE



NOZZLE SCHEDULE & ACCESSORIES						
SERVICE	MK	STOCK NO.	SIZE	FITTING	DEG	ELEV



NOTES:
 1. THIS IS A COMPUTER GENERATED DWG. DO NOT REVISE BY HAND.
 2. DIMENSIONS WILL VARY ±3% DUE TO VARIATIONS IN MULTIPLE MOLDS & CONDITIONS PREVALENT DURING MANUFACTURE & USAGE.
 3. 5 1/2" WIDE MOLDED IN GALLONAGE MARKERS @ APPROX 17° UP TO 9200 GAL.--AVOID WHEN PLACING FITTINGS.

NOTE: **MUST USE FLEXIBLE CONNECTIONS ALL LOWER SIDEWALL FITTINGS**

CALCULATED CAPACITIES/ VOLUME IN U.S. GALLONS		
DESIGN CAP	DOME VOL	TOTAL VOL
10177	675	10852

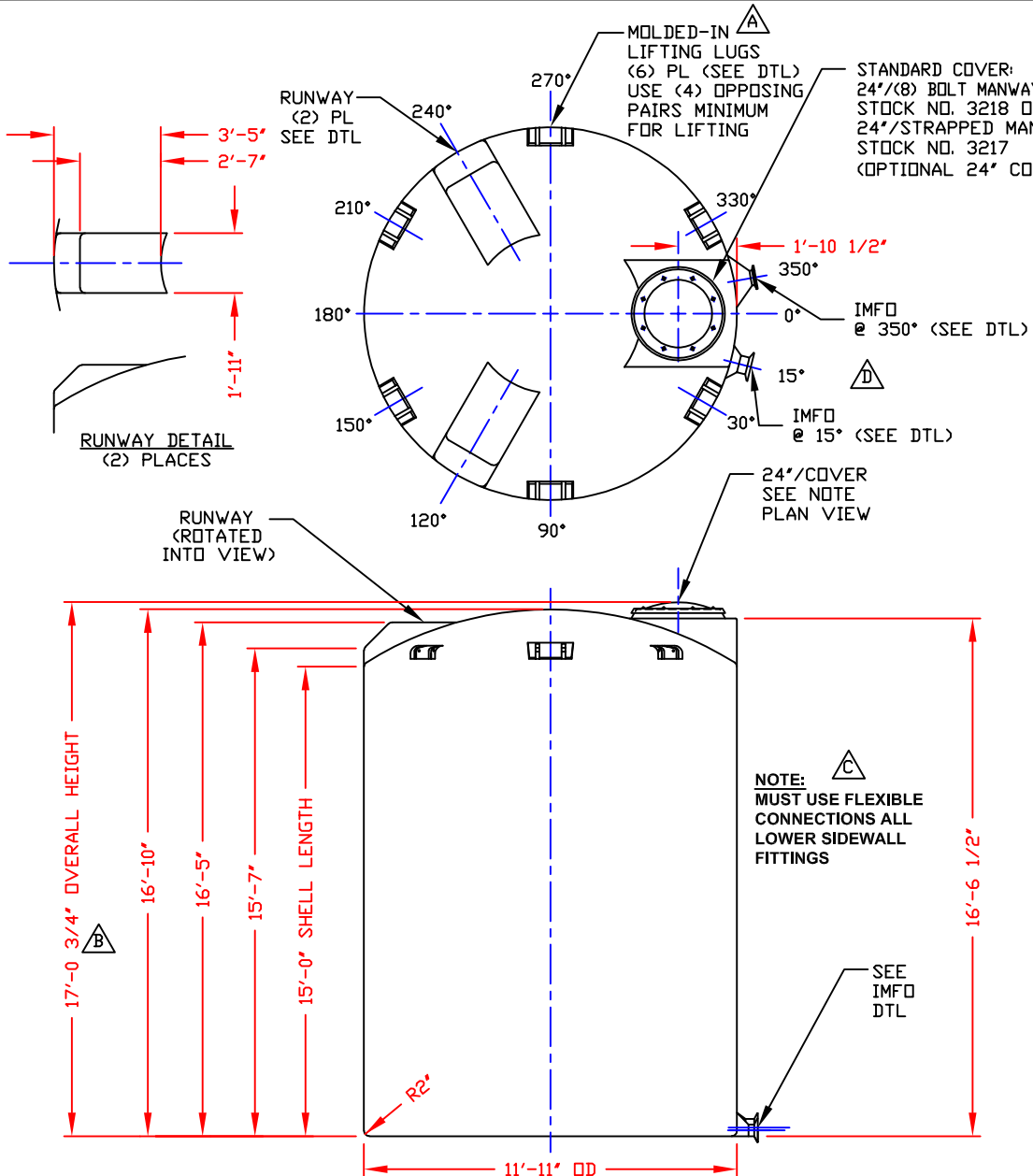
CONFIDENTIAL PROPERTY OF
 POLY PROCESSING COMPANY
 NOT FOR REPRINT OR USE
 WITHOUT PERMISSION

DWG TITLE 10150 GALLON IMFO TANK			
SCALE: 1/4"=1'-0"		Central Region P.O. Box 4150 (71211) 2201 Old Sterlington Rd. Monroe, LA 71203 (318) 343-7565 FAX (318) 343-8795	DR: B. HARPER
DATE: 09/19/19		CK:	
SHEET 1 OF 1	COMPUTER FILE IMFO-F-10150	REV E	

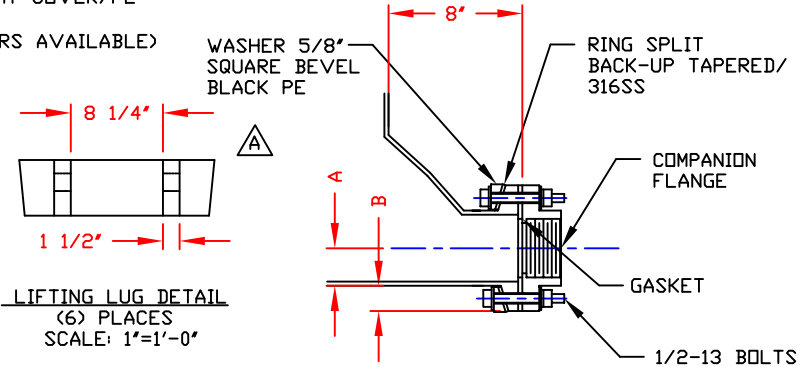
REV "E" DELETED GUTTERS BY:JB 5/2/08 CK:WM
 REV "D" ADDED LADDER ATTACHMENT LUGS BY:JB 6/18/04 CK:WM
 REV "C" ADDED FITTING NOTE BY:MBW 3/3/03 CK:JB
 REV "B" ADDED DIMENSION BY:JB 10/22/02 CK:MBW
 REV "A" ADDED LIFTING LUGS & DETAIL BY:MBW 5/28/02 CK:WM

B-25

NON-CONTROLLED COPY
 INFORMATION SUBJECT TO CHANGE WITHOUT NOTICE
 VERIFY REV LEVEL OF PAPER COPY WITH REV LEVEL ON PPC WEB SITE



NOZZLE SCHEDULE & ACCESSORIES					
SERVICE	MK	STOCK NO.	SIZE	FITTING	DEG ELEV



DIMENSION CHART		
PIPE SIZE	A	B
4"	2 1/4"	2 1/4"
6"	3 5/16"	2 3/16"

IMFO NOZZLE DETAIL
 (INTEGRALLY MOLDED FLANGED OUTLET)
 SCALE: NONE

NOTE: (2) IMFO NOZZLES MAY BE MOLDED IN TANK
 (1) @ 15° & (1) @ 350°
 4" IS STANDARD ON BOTH
 (1) 6" IS AVAILABLE @ EITHER LOCATION, BUT ONLY (1)
 IF IMFO LOCATED @ 350°, LOCATE LADDER @ 2.5°
 W/CURVED SIDEWALL BRACKET
 EITHER OR BOTH MAY BE BLOCKED OFF

- NOTES:
- THIS IS A COMPUTER GENERATED DWG. DO NOT REVISE BY HAND.
 - DIMENSIONS WILL VARY ±3% DUE TO VARIATIONS IN MULTIPLE MOLDS & CONDITIONS PREVALENT DURING MANUFACTURE & USAGE.
 - 5 1/2" WIDE MOLDED IN GALLONAGE MARKERS @ APPROX 23° UP TO 11200 GAL--AVOID WHEN PLACING FITTINGS.

CALCULATED CAPACITIES/ VOLUME IN U.S. GALLONS		
DESIGN CAP	DOME VOL	TOTAL VOL
12150	675	12825

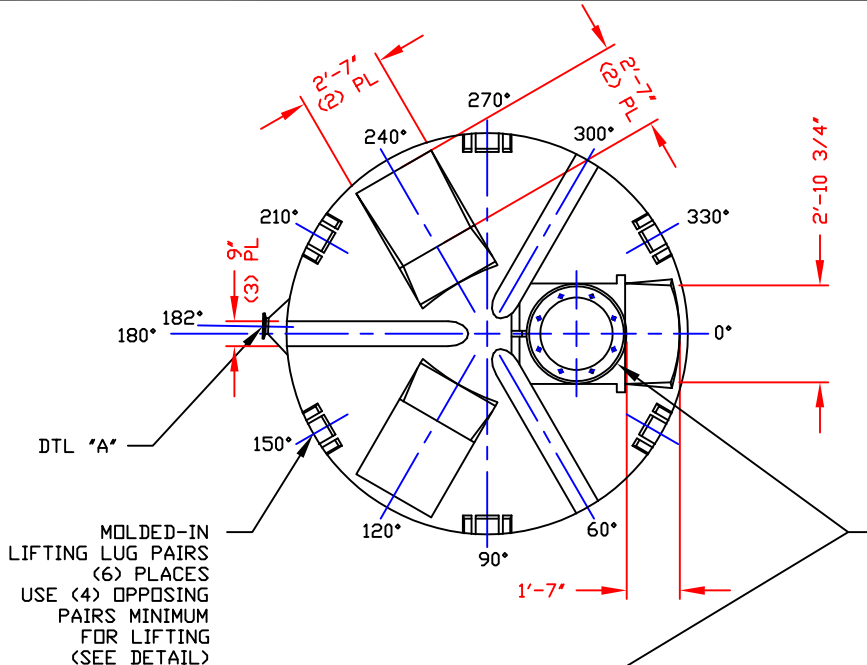
CONFIDENTIAL PROPERTY OF
 POLY PROCESSING COMPANY
 NOT FOR REPRINT OR USE
 WITHOUT PERMISSION

DWG TITLE 12150 GALLON DOUBLE IMFO TANK			
SCALE: 1/4"=1'-0"		Central Region P.O. Box 4150 (71810) 8001 Old Sterlington Rd. Morgan, LA 71053 CITY 343-7565 FAX (504) 343-8795	DR: B. HARPER
DATE: 09/19/19		CK: 	
SHEET 1 OF 1		COMPUTER FILE IMFO-F-12150	REV E

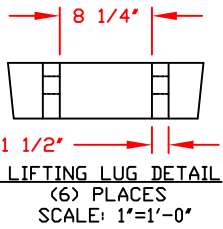
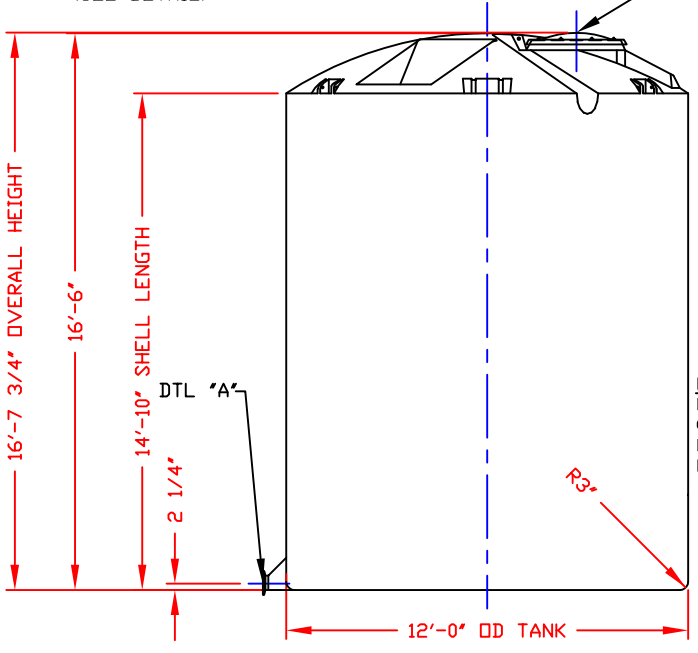
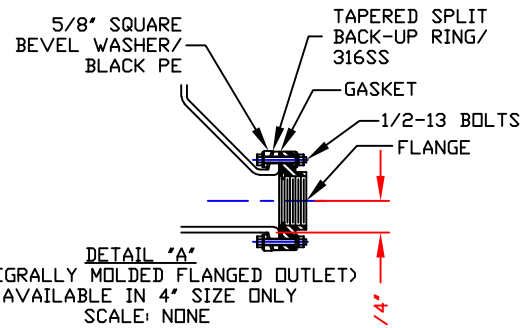
REV "E" REVISED IMFO NOTE BY:JB 4/8/13 CK:WM	REV "C" ADDED FITTING NOTE BY:MBW 3/3/03 CK:JB
REV "D" REVISED IMFO LOCATIONS BY:MBW 2/7/06 CK:JB	REV "B" ADDED DIMENSION BY:JB 10/22/02 CK:MBW
	REV "A" ADDED LIFTING LUGS & DETAIL BY:JB 6/5/02 CK:WM

NON-CONTROLLED COPY
 INFORMATION SUBJECT TO CHANGE WITHOUT NOTICE
 VERIFY REV LEVEL OF PAPER COPY WITH REV LEVEL ON PPC WEB SITE

NOZZLE SCHEDULE & ACCESSORIES					
SERVICE	MK	STOCK NO.	SIZE	FITTING	DEG ELEV




STANDARD COVER:
 24"/(8) BOLTS MANWAY COVER/PE (SHOWN)
 STOCK NO. 3218 OR
 24"/STRAPPED MANWAY COVER/PE
 STOCK NO. 3217
 (OPTIONAL 24" COVERS AVAILABLE)



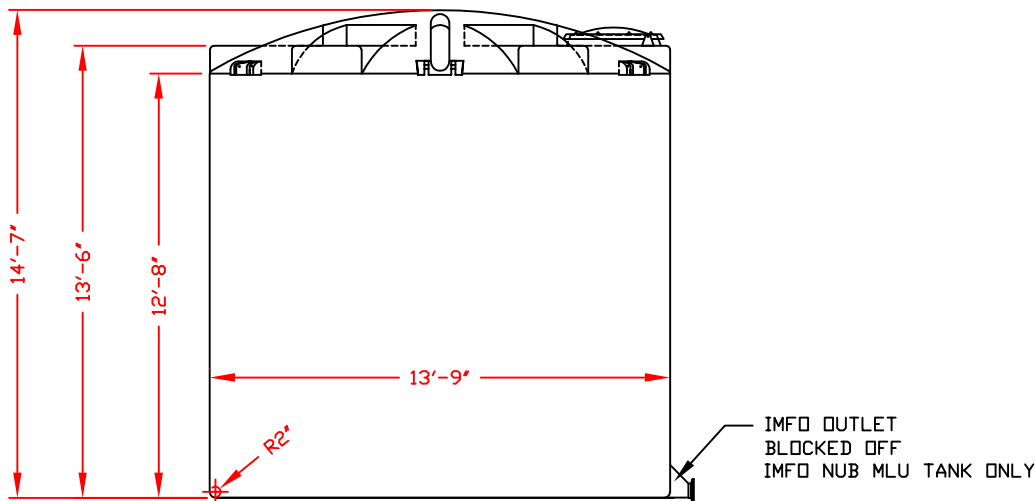
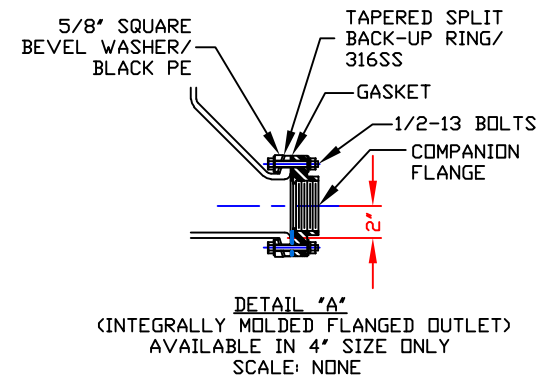
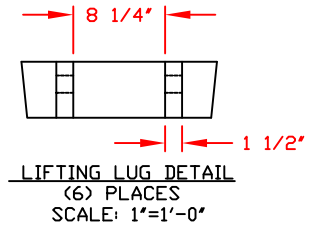
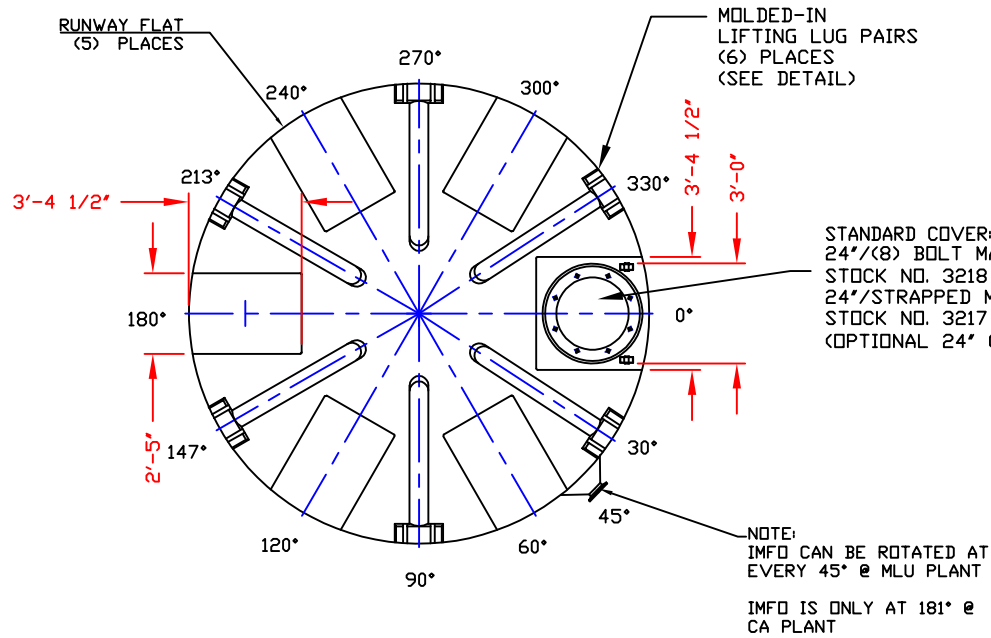
- NOTES**
1. THIS IS A COMPUTER GENERATED DWG. DO NOT REVISE BY HAND.
 2. DIMENSIONS WILL VARY ±3% DUE TO VARIATIONS IN MULTIPLE MOLDS & CONDITIONS PREVALENT DURING MANUFACTURE & USAGE.
 3. NO MOLDED IN GALLONAGE MARKERS THIS TANK.

CALCULATED CAPACITIES/ VOLUME IN U.S. GALLONS		
DESIGN CAP	DOME VOL	TOTAL VOL
12189	640	12829

CONFIDENTIAL PROPERTY OF
 POLY PROCESSING COMPANY
 NOT FOR REPRINT OR USE
 WITHOUT PERMISSION

DVG TITLE				12200 GALLON IMFO TANK		
SCALE:	1/4"=1'-0"	 POLYPROCESSING SOLUTIONS, SIMPLIFIED.	Western Region P.O. Box 88 9525 South Ash Street French Camp, CA 95231 (209) 982-9564 FAX (209) 982-0455		DR:	B. HARPER
DATE:	09/25/19		CK:			
SHEET		COMPUTER FILE		REV		
1 OF 1		IMFO-F-12200		-		

NON-CONTROLLED COPY
 INFORMATION SUBJECT TO CHANGE WITHOUT NOTICE
 VERIFY REV LEVEL OF PAPER COPY WITH REV LEVEL ON PPC WEB SITE

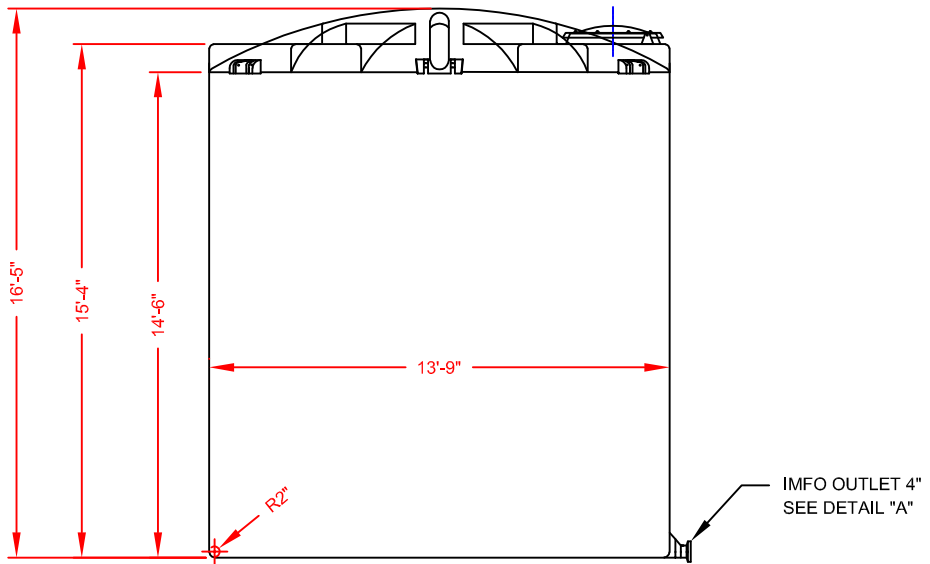
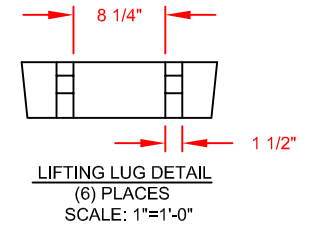
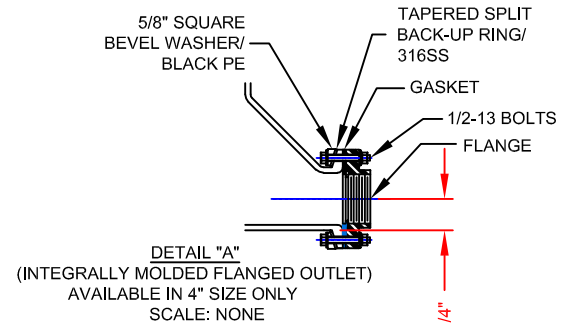
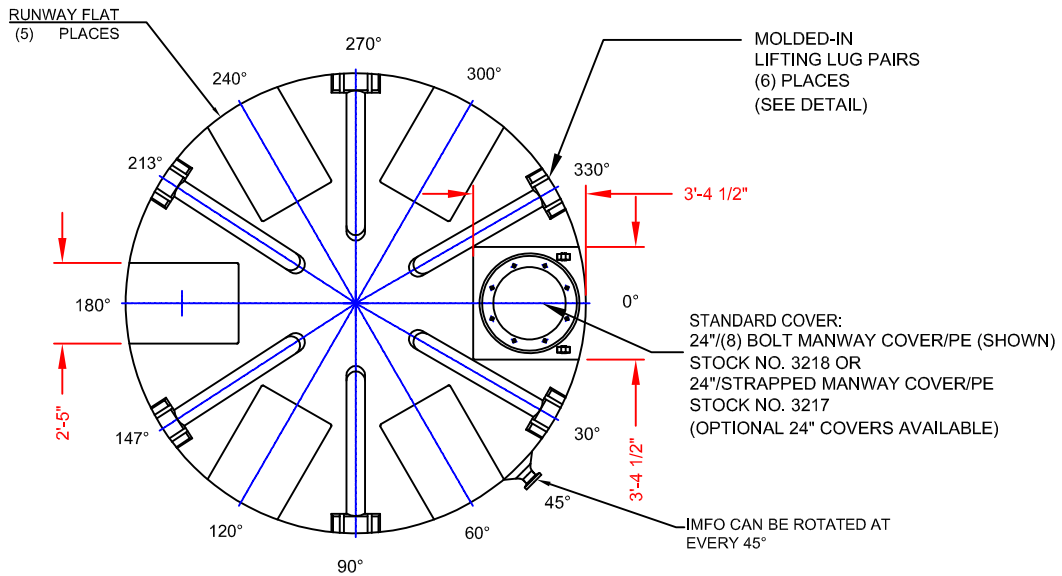


CALCULATED CAPACITIES/ VOLUME IN U.S. GALLONS		
DESIGN CAP	DOME VOL	TOTAL VOL
13650	994	14644

CONFIDENTIAL PROPERTY OF
 POLY PROCESSING COMPANY
 NOT FOR REPRINT OR USE
 WITHOUT PERMISSION

DWG TITLE			
13650 GALLON IMFO TANK			
SCALE:	1/4"=1'-0"		DR:
DATE:	09/25/19		CK:
		SHEET	COMPUTER FILE
		1 OF 1	IMFO-F-13650
			REV
			-

NON-CONTROLLED COPY
 INFORMATION SUBJECT TO CHANGE WITHOUT NOTICE
 VERIFY REV LEVEL OF PAPER COPY WITH REV LEVEL ON PPC WEB SITE



- NOTES**
1. THIS IS A COMPUTER GENERATED DWG. DO NOT REVISE BY HAND.
 2. DIMENSIONS WILL VARY ±3% DUE TO VARIATIONS IN MULTIPLE MOLDS & CONDITIONS PREVALENT DURING MANUFACTURE & USAGE.
 3. NO MOLDED IN GALLONAGE MARKERS THIS TANK.

CALCULATED CAPACITIES/ VOLUME IN U.S. GALLONS		
DESIGN CAP	DOME VOL	TOTAL VOL
15653	994	16647

CONFIDENTIAL PROPERTY OF
 POLY PROCESSING COMPANY
 NOT FOR REPRINT OR USE
 WITHOUT PERMISSION

DWG TITLE				15500 GALLON IMFO TANK	
SCALE:	1/4"=1'-0"		DR:	B. HARPER	
DATE:	12/31/19		CK:	-	
		SHEET	COMPUTER FILE	REV	
		1 OF 1	IMFO-F-15500	B	