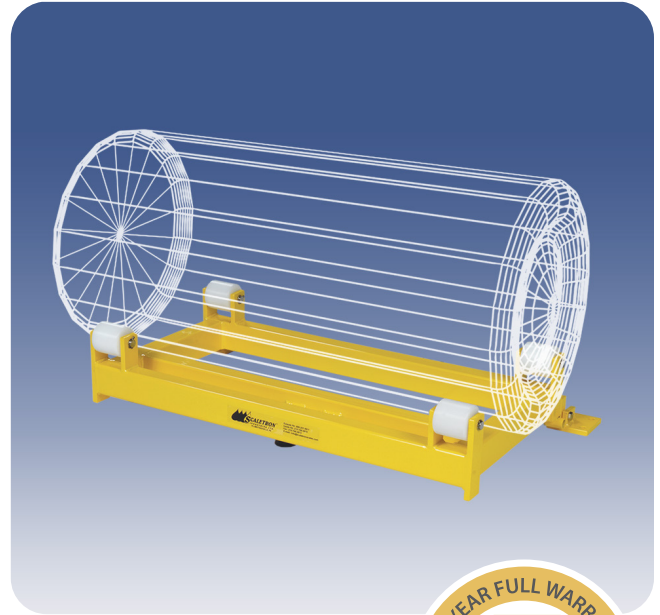




SCALETRON™ SETS THE STANDARD
IN CORROSION RESISTANCE™

Model 3000™ Digital Ton Cylinder Scales

- Standard base sizes: 42-1/2" x 24-1/4"
- Net capacity: Up to 2,000 lbs. (907 or 1000 kg)
- High accuracy of $\pm 0.25\%$ of capacity
- Single or multi-channel controllers with easy readability to 0.1 lb. (kg)
- 1 to 6 Bases may be summed together into one indicator
- Readout in pounds or kilograms, gallons or liters



AccuPro 5000-EK
Controller with
Encoder Knob

AccuPro 5000-PB
Controller with
3 Button Keypad

AccuPro 6000-TS
Controller with
Touch Screen

AccuPro 7000-TS
Controller with
Touch Screen

Rugged Scale Provides Accurate Weighing of Ton Containers in High Volume Operations

Model 3000 is designed for weighing standard ton cylinders from 22" to 39" in diameter. Featuring an economical single load cell design, the rugged low-profile base allows for safe and easy handling of containers. MADE IN USA.

Standard Features

- Rugged steel construction protected by a corrosion resistant dry powder epoxy finish
- Low profile platform design (8.63") increases safety and ease of cylinder handling
- Trunnions with solid UHMW polyethylene rollers on stainless steel axles for ease of turning
- NTEP stainless steel shear beam, temperature compensated load cell with built-in mechanical overload stop to protect it from damage during rough cylinder loading
- Electronic indicator housed in NEMA 4X, UL approved enclosure to provide protection from acids
- 20 ft. of 4 conductor wire cable

Available Controllers

- AccuPro 5000-EK/PB™ with one or 2 channels, encoder knob or 3 button keypad, audible alarm and 4-20 mA output – scale or loop powered
- AccuPro 6000™ with one or 2 channels or AccuPro 7000™ with up to 4 channels, touch screen, optional audible alarm and 4-20 mA outputs – scale powered

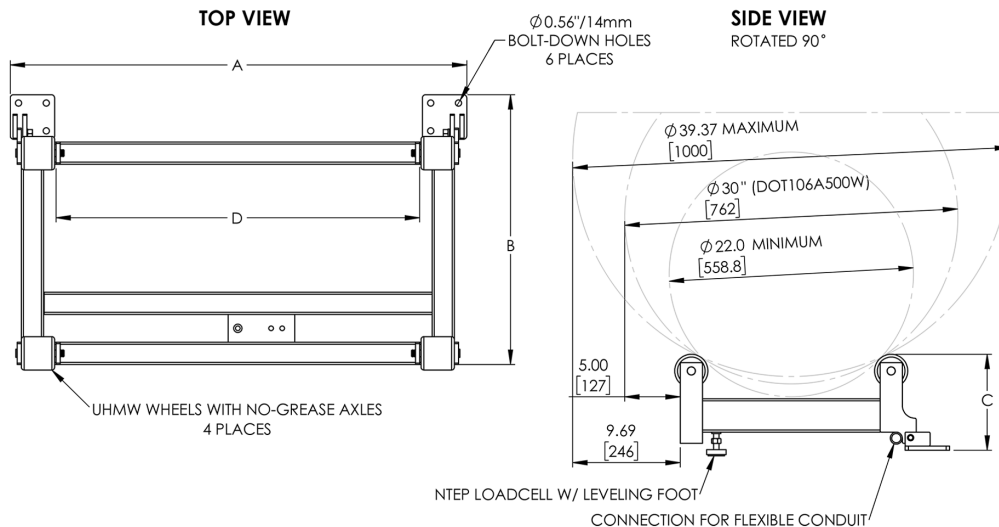
Options

- High and low level set points
- 0-5V or 0-10V output signal
- Remote mounting of indicator box up to 200 feet away
- Cylinder restraining straps

Chemicals

- Scale is designed to accurately measure weight of ammonia, carbon dioxide, hydrogen chloride, liquefied chlorine, sulfur dioxide and other liquid gases

Model 3000™ Digital Ton Cylinder Scale Sizes & Specifications



Scale Base

PART NUMBER	3000
Platform Length (A)	41.13" (1045 mm)
Platform Width (B)	24.25" (616 mm)
Platform Height (C)	8.63" (219 mm) from floor to top of 3" UHMW roller
D	32.75" (832 mm)
Net Capacity	Up to 2000 lbs. (907 or 1000 kg) (150% overload protection is provided)
Weight	110 lbs.

Digital Controllers

PART NUMBER	ACCUPRO 5000-EK or PB	ACCUPRO 6000-TS	ACCUPRO 7000-TS
Interface	Encoder knob or 3 button keypad	Touch screen	Touch screen
Accuracy	±0.1% to ±0.25% of full scale capacity	±0.1% to ±0.25% of full scale capacity	±0.1% to 0.25% of full scale capacity
Display	2 Line x 16 character alphanumeric backlit LCD with 6 digits for weight	4.3" Graphic color touch screen display with adjustable brightness	4.3" Graphic color LCD touch screen display with adjustable brightness
Display Items	Net weight plus bar graph with net weight, gross weight and tare adjustment	Net and gross weight, % and bar graphs plus mA out, tare adjustment and set point values	Net and gross weight, % and bar graphs; mA out, tare adj., set points; data log, feed rate, daily usage, amount used, days till empty; batch net wt, batch and total amount, time
Channels	1 or 2 - One scale base per channel	1 or 2 - One scale base per channel	Up to 4 - One scale base per channel
Output Signal	4-20mA Standard, 0-5V or 0-10V optional - scale or loop powered	4-20mA Standard - scale powered	4-20mA Optional - scale powered
Set Points	2 or 4 Per channel (high or low)	2 or 4 Per channel (high or low)	2 or 4 Per channel (high or low) - max. 8
Remote Option	Up to 200 feet from base frame	Up to 200 feet from base frame	Up to 200 feet from base frame
Audible Alarm	78 dB Internal piezo buzzer, adjustable volume, external buzzer support	Optional 78 dB internal piezo buzzer, external buzzer support	Optional 78 dB internal piezo buzzer, external buzzer support
Communication Option		Modbus TCP or RTU	Modbus TCP or RTU
Power	90/240 VAC, 50/60Hz, 0.10/00.5A	100/277 VAC, 50/60 Hz, 0.10/0.05A	100/277 VAC, 50/60 Hz, 0.10/0.05A
Weight	NEMA 4X, UL approved enclosure	NEMA 4X, UL approved enclosure	NEMA 4X, UL approved enclosure
Enclosure	7lbs.	7lbs.	7lbs.

Scaleton Industries Ltd.

Bedminster Industrial Park
53 Apple Tree Lane • P.O. Box 365
Plumsteadville, PA 18949 • USA

Tel: (+1) 215-766-2670 (International)
Tel: (+1) 800-257-5911 (USA & Canada)
Fax: (+1) 215-766-2672

Email: info@scaletonscales.com
Website: www.scaletonscales.com

Ton Cylinder Scale Accessories

- Designed for use with Model 3000™ Digital Ton Cylinder Scales
- Features rugged steel construction protected by a corrosion resistant finish
- Gross Capacity: Up to 4,000 lbs. (1814 kg) for lifting bar and trunnions
- Lifting bar includes heavy duty hooks, lifting bail and two fork lift carry points
- Trunnions are constructed with solid UHMW polyethylene rollers on stainless steel axles for ease of turning



Model 3000LB™ Ton Cylinder Lifting Bar

Easily Lift and Transport Ton Cylinders and Containers

Model 3000LB is designed for easy lifting and transporting of ton cylinders and containers with a gross weight of up to 4,000 lbs. Featuring rugged construction, lifting bar includes heavy duty hooks, lifting bail and two fork lift carry points. MADE IN USA.

Model 3000ST™ Ton Cylinder Storage Trunnions

Provides Simple and Efficient Method for Storing of Ton Containers

Model 3000ST are heavy-duty cradles designed for storing ton containers and cylinders prior to use with a gross weight of up to of 4,000 lbs. Featuring rugged construction and solid UHMW polyethylene rollers, set includes two (2) trunnions. MADE IN USA.

Model 3000TW™ Ton Cylinder Turning Wrench

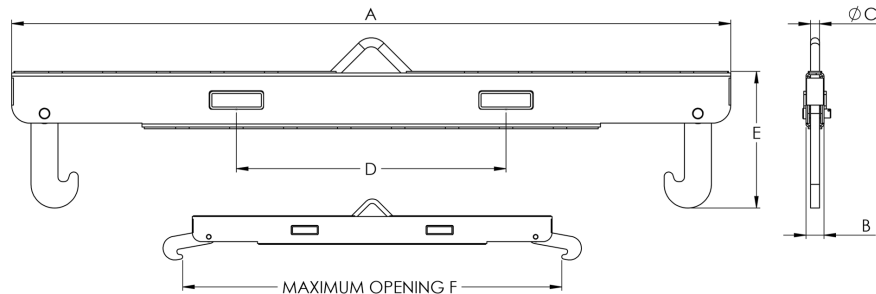
Makes Turning Ton Cylinders and Containers Easy

Model 3000TW is designed to make turning ton cylinders and containers easier. Featuring rugged construction, wrench is 48" long to provide the extra torque needed to aid in turning the cylinder. MADE IN USA.

Ton Cylinder Scale Accessories General Specifications

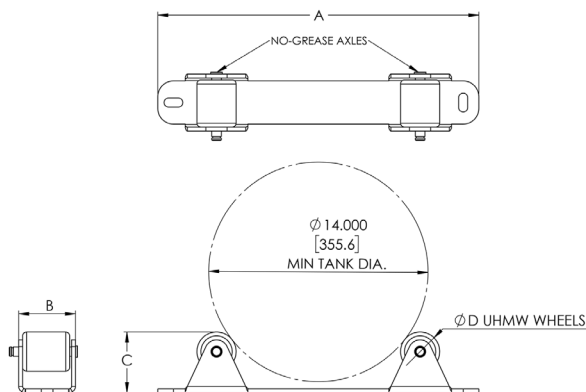
Model 3000LB™ Ton Cylinder Lifting Bar Specifications

PART NUMBER	3000LB
A	80.00" (2032 mm)
B	30.00" (762 mm)
C	1.00" (25 mm)
D	2.00" (51 mm)
E	15.19" (386 mm)
F	84.30" (2130 mm)
Gross Capacity	4000 lbs. (1814 kg)
Weight	110 lbs.



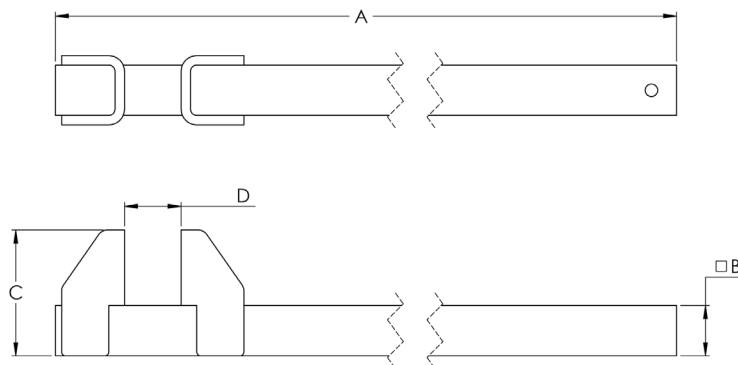
Model 3000ST™ Ton Cylinder Storage Trunnions Specifications

PART NUMBER	3000ST
A	20.5" (521 mm)
B	3.875" (92 mm)
C	3.625" (92 mm)
D	2.50" (64 mm)
Gross Capacity	4000 lbs. (1814 kg)
Weight	17 lbs.



Model 3000TW™ Ton Cylinder Turning Wrench Specifications

PART NUMBER	3000TW-48
A	48.0" (1219 mm)
B	2.50" (64 mm)
C	1.25" (32 mm)
D	1.0" (26 mm)
Weight	10 lbs.



Scaletron Industries Ltd.

Bedminster Industrial Park
53 Apple Tree Lane • P.O. Box 365
Plumsteadville, PA 18949 • USA

Tel: (+1) 215-766-2670 (International)
Tel: (+1) 800-257-5911 (USA & Canada)
Fax: (+1) 215-766-2672

Email: info@scaletronscales.com
Website: www.scaletronscales.com